

For Research Use Only

# CTSA Recombinant monoclonal antibody, PBS Only (Capture)

Catalog Number: 80273-2-PBS



## Basic Information

Catalog Number:

80273-2-PBS

Source:

Rabbit

Isotype:

IgG

Immunogen Catalog Number:

AG7073

GenBank Accession Number:

BC000597

GeneID (NCBI):

5476

UNIPROT ID:

P10619

Full Name:

cathepsin A

Calculated MW:

54 kDa

Purification Method:

Protein A purification

CloneNo.:

251086D1

## Applications

Tested Applications:

Sandwich ELISA, Indirect ELISA

Species Specificity:

human

## Background Information

### Storage

Storage:

Store at -80°C.

The product is shipped with ice packs. Upon receipt, store it immediately at -80°C

Storage Buffer:

PBS only, pH7.3

For technical support and original validation data for this product please contact:

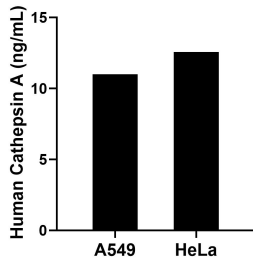
T: 4006900926

E: [Proteintech-CN@ptglab.com](mailto:Proteintech-CN@ptglab.com)

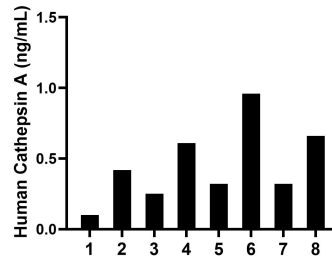
W: [ptgcn.com](http://ptgcn.com)

This product is exclusively available under Proteintech Group brand and is not available to purchase from any other manufacturer.

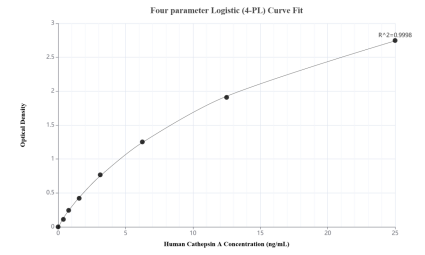
## Selected Validation Data



The mean Cathepsin A concentration was determined to be 10.99 ng/mL in A549 cell extract based on a 1.10 mg/mL extract load and 12.57 ng/mL in HeLa cell extract based on a 1.10 mg/mL extract load.



Serum of eight individual healthy human donors was measured. The Cathepsin A concentration of detected samples was determined to be 0.46 ng/mL with a range of 0.10-0.96 ng/mL.



Sandwich ELISA standard curve of MP02549-1, Human Cathepsin A Recombinant Matched Antibody Pair - PBS only. 80273-2-PBS was coated to a plate as the capture antibody and incubated with serial dilutions of standard Ag7073. 80273-3-PBS was HRP conjugated as the detection antibody. Range: 0.391-25 ng/mL