

For Research Use Only

Vimentin Recombinant antibody, PBS Only

Catalog Number: 80232-1-PBS

Featured Product



Basic Information

Catalog Number:

80232-1-PBS

Concentration:

1mg/ml

Source:

Rabbit

Isotype:

IgG

Immunogen Catalog Number:

AG0489

GenBank Accession Number:

BC000163

GeneID (NCBI):

7431

ENSEMBL Gene ID:

ENSG00000026025

UNIPROT ID:

P08670

Full Name:

vimentin

Calculated MW:

466 aa, 54 kDa

Observed MW:

50-55 kDa

Purification Method:

Protein A purification

CloneNo.:

6K21

Applications

Tested Applications:

WB, IHC, IF/ICC, IF-Fro, Indirect ELISA

Species Specificity:

human, mouse, rat

Background Information

Vimentin, also named as VIM, belongs to the intermediate filament family. Vimentin is class-III intermediate filaments found in various non-epithelial cells, especially mesenchymal cells. Vimentin is important for stabilizing the architecture of the cytoplasm. Monocyte-derived macrophages secrete vimentin into the extracellular space in vitro. Secretion of vimentin was enhanced by the proinflammatory cytokine tumor necrosis factor- α (TNF α ; 191160) and inhibited by the antiinflammatory cytokine IL10 (124092), suggesting that vimentin is involved in the immune response. Vimentin has specialized functions that contribute to specific dynamic cellular processes. As a phosphoprotein, 55-60 kDa of vimentin proteins can be observed due to the different phosphorylation level. Isoforms of vimentin (49 kDa and 60 kDa) had also been reported. (PMID: 8640945, 22728585).

Storage

Storage:

Store at -80°C.

The product is shipped with ice packs. Upon receipt, store it immediately at -80°C

Storage Buffer:

PBS Only

For technical support and original validation data for this product please contact:

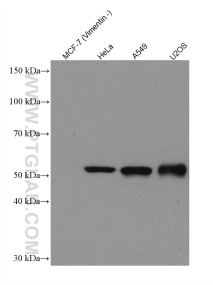
T: 4006900926

E: Proteintech-CN@ptglab.com

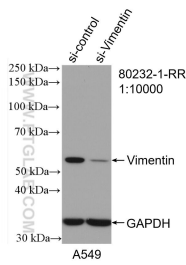
W: ptgcn.com

This product is exclusively available under Proteintech Group brand and is not available to purchase from any other manufacturer.

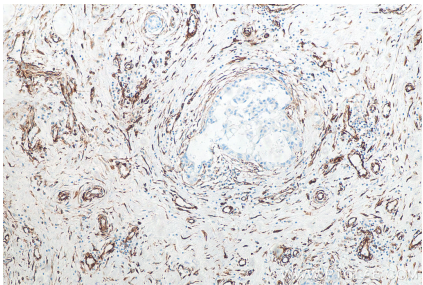
Selected Validation Data



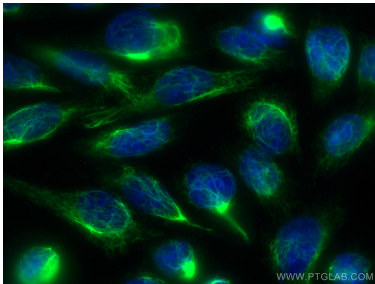
Various lysates were subjected to SDS PAGE followed by western blot with 80232-1-RR (Vimentin antibody) at dilution of 1:50000 incubated at room temperature for 1.5 hours. This data was developed using the same antibody clone with 80232-1-PBS in a different storage buffer formulation.



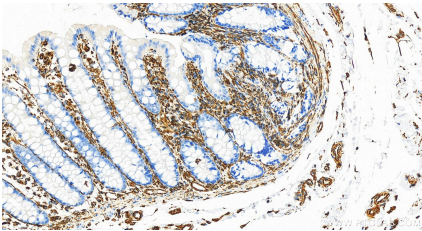
WB result of Vimentin antibody (80232-1-RR; 1:10000; incubated at room temperature for 1.5 hours) with sh-Control and sh-Vimentin transfected HeLa cells. This data was developed using the same antibody clone with 80232-1-PBS in a different storage buffer formulation.



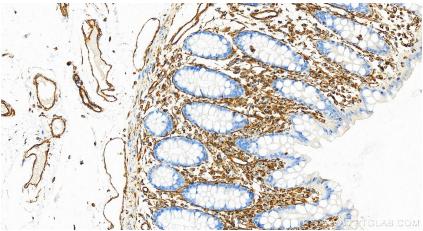
Immunohistochemical analysis of paraffin-embedded human breast cancer tissue slide using 80232-1-RR (Vimentin antibody) at dilution of 1:2500 (under 10x lens). Heat mediated antigen retrieval with Tris-EDTA buffer (pH 9.0). This data was developed using the same antibody clone with 80232-1-PBS in a different storage buffer formulation.



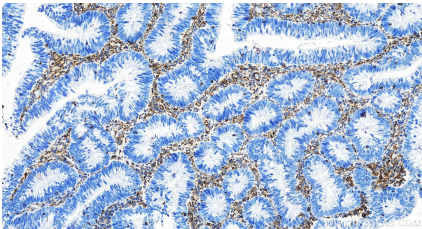
Immunofluorescent analysis of (-20°C Ethanol) fixed HepG2 cells using Vimentin antibody (80232-1-RR, Clone: 6K21) at dilution of 1:400 and CoraLite®488-Conjugated AffiniPure Goat Anti-Rabbit IgG(H+L). This data was developed using the same antibody clone with 80232-1-PBS in a different storage buffer formulation.



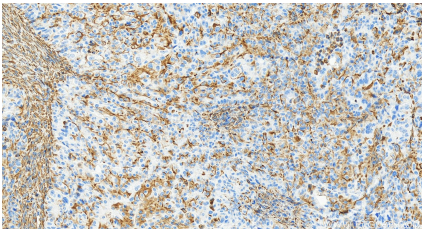
Immunohistochemical analysis of paraffin-embedded human normal colon slide using 80232-1-RR (Vimentin antibody) at dilution of 1:10000 (under 20x lens). Heat mediated antigen retrieval with Tris-EDTA buffer (pH 9.0). This data was developed using the same antibody clone with 80232-1-PBS in a different storage buffer formulation.



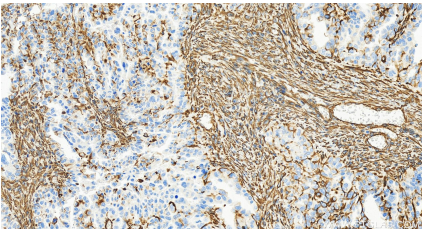
Immunohistochemical analysis of paraffin-embedded human normal colon slide using 80232-1-RR (Vimentin antibody) at dilution of 1:10000 (under 20x lens). Heat mediated antigen retrieval with Tris-EDTA buffer (pH 9.0). This data was developed using the same antibody clone with 80232-1-PBS in a different storage buffer formulation.



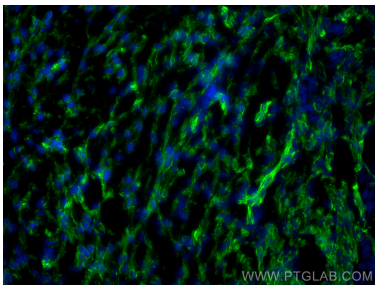
Immunohistochemical analysis of paraffin-embedded human colon cancer tissue slide using 80232-1-RR (Vimentin antibody) at dilution of 1:10000 (under 20x lens). Heat mediated antigen retrieval with Tris-EDTA buffer (pH 9.0). This data was developed using the same antibody clone with 80232-1-PBS in a different storage buffer formulation.



Immunohistochemical analysis of paraffin-embedded human ovary cancer tissue slide using 80232-1-RR (Vimentin antibody) at dilution of 1:10000 (under 20x lens). Heat mediated antigen retrieval with Tris-EDTA buffer (pH 9.0). This data was developed using the same antibody clone with 80232-1-PBS in a different storage buffer formulation.



Immunohistochemical analysis of paraffin-embedded human ovary cancer tissue slide using 80232-1-RR (Vimentin antibody) at dilution of 1:10000 (under 20x lens). Heat mediated antigen retrieval with Tris-EDTA buffer (pH 9.0). This data was developed using the same antibody clone with 80232-1-PBS in a different storage buffer formulation.



Immunofluorescent analysis of (4% PFA) fixed frozen OCT-embedded mouse breast cancer using Vimentin antibody (80232-1-RR, Clone: 6K21) at dilution of 1:400 and CoraLite®488-Conjugated Goat Anti-Rabbit IgG(H+L) (SA00013-2). This data was developed using the same antibody clone with 80232-1-PBS in a different storage buffer formulation.