

S6 Ribosomal protein Recombinant antibody

Catalog Number: 80208-1-RR

Basic Information

Catalog Number:

80208-1-RR

Size:

300 µg/ml

Source:

Rabbit

Isotype:

IgG

GenBank Accession Number:

BC000524

GeneID (NCBI):

6194

UNIPROT ID:

P62753

Full Name:

ribosomal protein S6

Calculated MW:

29 kDa

Observed MW:

32 kDa

Purification Method:

Protein A purification

CloneNo.:

6L9

Recommended Dilutions:

WB 1:5000-1:50000

IF 1:50-1:500

Applications

Tested Applications:

IF/ICC, WB, ELISA

Species Specificity:

Human, rat, mouse, Zebrafish

Positive Controls:

WB : LNCaP cells, RAW 264.7 cells, zebrafish tissue, HeLa cells, HEK-293 cells, HepG2 cells, Jurkat cells, HSC-T6 cells, 4T1 cells

IF : HepG2 cells,

Background Information

Ribosomal protein S6 (RPS6), Phosphoprotein NP33. It may play an important role in controlling cell growth and proliferation through the selective translation of particular classes of mRNA. Ribosomal protein S6 is the major substrate of protein kinases in eukaryote ribosomes. The phosphorylation is stimulated by growth factors, tumor promoting agents, and mitogens. It is dephosphorylated at growth arrest. Phosphorylated at Ser-235 and Ser-236 by RPS6KA1 and RPS6KA3; phosphorylation at these sites facilitates the assembly of the preinitiation complex.

Storage

Storage:

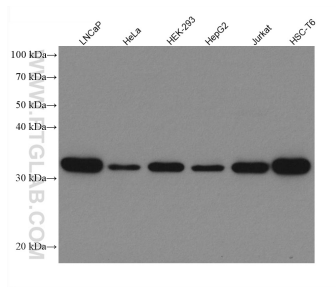
Store at -20°C. Stable for one year after shipment.

Storage Buffer:

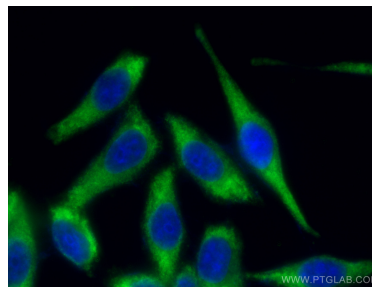
PBS with 0.02% sodium azide and 50% glycerol pH 7.3.

Aliquoting is unnecessary for -20°C storage

Selected Validation Data



Various lysates were subjected to SDS PAGE followed by western blot with 80208-1-RR (S6 Ribosomal protein antibody) at dilution of 1:15000 incubated at room temperature for 1.5 hours.



Immunofluorescent analysis of (-20°C Methanol) fixed HepG2 cells using S6 Ribosomal protein antibody (80208-1-RR, Clone: 6L9) at dilution of 1:200 and CoraLite®488-Conjugated AffiniPure Goat Anti-Rabbit IgG(H+L).