

# TMPRSS2 Recombinant antibody

Catalog Number: 80152-1-RR

## Basic Information

**Catalog Number:**

80152-1-RR

**Size:**

1000 µg/ml

**Source:**

Rabbit

**Isotype:**

IgG

**Immunogen Catalog Number:**

AG5824

**GenBank Accession Number:**

BC051839

**GeneID (NCBI):**

7113

**UNIPROT ID:**

O15393

**Full Name:**

transmembrane protease, serine 2

**Calculated MW:**

54 kDa

**Observed MW:**

55 kDa

**Purification Method:**

Protein A purification

**CloneNo.:**

715

**Recommended Dilutions:**

WB 1:2000-1:10000

## Applications

**Tested Applications:**

WB, ELISA

**Species Specificity:**

Human

**Positive Controls:**

WB : PC-3 cells, LNCaP cells, Caco-2 cells, COLO 320 cells, HT-29 cells

## Background Information

TMPRSS2, also named as PRSS10, is a type II transmembrane serine protease which is highly expressed by the epithelium of the human prostate gland. TMPRSS2 may contribute to prostate tumor metastasis via the activation of PAR-2. TMPRSS2 is a Serine protease that proteolytically cleaves and activates the viral spike glycoproteins which facilitate virus-cell membrane fusions. TMPRSS2 as a host cell factor that is critical for spread of several clinically relevant viruses, including influenza A viruses and coronaviruses (PMID: 23468491, 30626688). SARS-CoV-2 uses the SARS-CoV receptor ACE2 for entry and the serine protease TMPRSS2 for S protein priming. The initial spike protein priming by TMPRSS2 is essential for entry and viral spread of SARS-CoV-2 through interaction with the ACE2 receptor (PMID: 32142651, 30626688). Camostat mesylate, an inhibitor of TMPRSS2, can block SARS-CoV-2 infection of lung cells (PMID: 32142651). The MW of TMPRSS2 is about 65-70 kDa. It can be cleaved into some chains with MW 54 kDa, 31 kDa and 26 kDa (PMID: 25734995, 20382709, 26018085).

## Storage

**Storage:**

Store at -20°C. Stable for one year after shipment.

**Storage Buffer:**

PBS with 0.02% sodium azide and 50% glycerol pH 7.3.

Aliquoting is unnecessary for -20°C storage

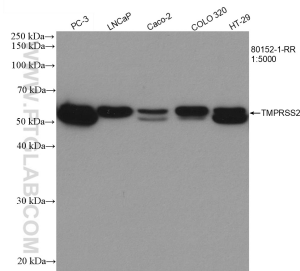
For technical support and original validation data for this product please contact:

T: 4006900926

E: [Proteintech-CN@ptglab.com](mailto:Proteintech-CN@ptglab.com)W: [ptgcn.com](http://ptgcn.com)

This product is exclusively available under Proteintech Group brand and is not available to purchase from any other manufacturer.

## Selected Validation Data



Various lysates were subjected to SDS PAGE followed by western blot with 80152-1-RR (TMPRSS2 antibody) at dilution of 1:5000 incubated at room temperature for 1.5 hours.