

For Research Use Only

Phospho-ASK1 (Ser966) Recombinant monoclonal antibody

Catalog Number: 80142-8-RR



Basic Information

Catalog Number:

80142-8-RR

Source:

Rabbit

Isotype:

IgG

GenBank Accession Number:

BC054503

GeneID (NCBI):

4217

UNIPROT ID:

Q99683

Full Name:

mitogen-activated protein kinase
kinase kinase 5

Calculated MW:

155 kDa

Observed MW:

155 kDa

Purification Method:

Protein A purification

CloneNo.:

252570F2

Recommended Dilutions:

WB: 1:2000-1:10000

Applications

Tested Applications:

WB, ELISA

Species Specificity:

human, mouse, monkey

Positive Controls:

WB: COS-7 cells, NIH/3T3 cells, λ phosphatase treated COS-7 cells

Background Information

ASK1 (Apoptosis signal-regulating kinase 1) is also named as MAP3K5, MAPKKK5, MEKK5 and belongs to the MAP kinase kinase kinase subfamily. It is an evolutionarily conserved mitogen activated protein 3-kinase that activates both Jnk and p38 mitogen-activated protein kinases. ASK1 is activated in response to various cytotoxic stresses including TNF, Fas and reactive oxygen species (ROS) such as H₂O₂, and activates c-Jun NH₂-terminal kinase (JNK) and p38. The predicted MW of ASK1 is around 155 kDa and the 110-120 kDa fragment has also been reported.

Storage

Storage:

Store at -20°C. Stable for one year after shipment.

Storage Buffer:

PBS with 0.02% sodium azide and 50% glycerol, pH7.3

Aliquoting is unnecessary for -20°C storage

For technical support and original validation data for this product please contact:

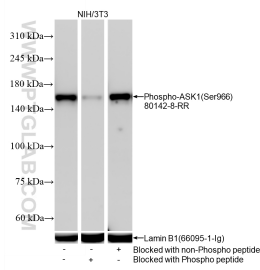
T: 4006900926

E: Proteintech-CN@ptglab.com

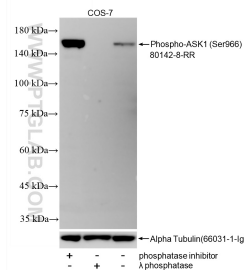
W: ptgcn.com

This product is exclusively available under Proteintech Group brand and is not available to purchase from any other manufacturer.

Selected Validation Data



NIH/3T3 cell lysates were subjected to SDS PAGE followed by western blot with 80142-8-RR (Phospho-ASK1 (Ser966) antibody) blocked with BSA only, Phospho-ASK1 (Ser966) peptide or non-Phospho peptide at dilution of 1:5000 incubated at room temperature for 1.5 hours. The membrane was stripped and re-blotted with Lamin B1 (66095-1-Ig) antibody as a loading control.



Non-treated COS-7, phosphatase inhibitor treated and λ phosphatase treated COS-7 cells were subjected to SDS PAGE followed by western blot with 80142-8-RR (Phospho-ASK1 (Ser966) antibody) at dilution of 1:5000 incubated at room temperature for 1.5 hours. The membrane was stripped and re-blotted with Alpha Tubulin (66031-1-Ig) antibody as a loading control.