

For Research Use Only

# MAP2K3 Recombinant antibody, PBS Only



Catalog Number: 80137-1-PBS

Featured Product

## Basic Information

Catalog Number:

80137-1-PBS

Size:

1 mg/ml

Source:

Rabbit

Isotype:

IgG

GenBank Accession Number:

BC032478

GeneID (NCBI):

5606

UNIPROT ID:

P46734

Full Name:

mitogen-activated protein kinase kinase 3

Calculated MW:

347 aa, 39 kDa

Observed MW:

39 kDa

Purification Method:

Protein A purification

CloneNo.:

3010

## Applications

Tested Applications:

WB, Indirect ELISA, IF

Species Specificity:

Human, Mouse, Rat, Zebrafish

## Background Information

MAP2K3, also named as MKK3, is a member of dual specificity kinase group and serves as a specific activator of p38 MAPK with MKK6. MKK3 can be phosphorylated by cytokines and environmental stress at sites Ser189 and Thr193 by MKKK proteins (MEKK 1-4). MKK3 plays a key role in cell differentiation, motility, division and death. It has been reported that MKK3 targeting may represent an effective and potentially safe therapeutic strategy to selectively kill cancer cells in colorectal cancer patients. (PMID: 31695024, 30770795, 26805700, 8622669)

## Storage

Storage:

Store at -80°C.

The product is shipped with ice packs. Upon receipt, store it immediately at -80°C

Storage Buffer:

PBS Only

For technical support and original validation data for this product please contact:

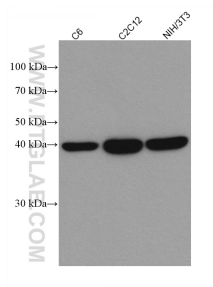
T: 4006900926

E: [Proteintech-CN@ptglab.com](mailto:Proteintech-CN@ptglab.com)

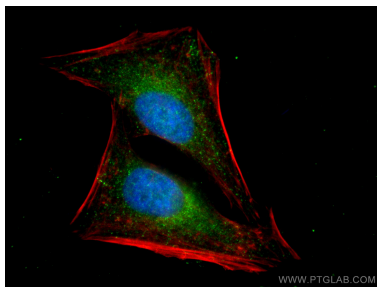
W: [ptgcn.com](http://ptgcn.com)

This product is exclusively available under Proteintech Group brand and is not available to purchase from any other manufacturer.

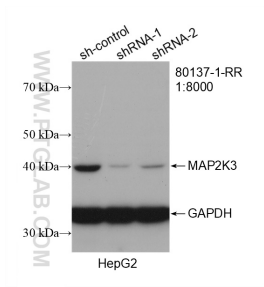
## Selected Validation Data



Various lysates were subjected to SDS PAGE followed by western blot with 80137-1-RR (MAP2K3 antibody) at dilution of 1:5000 incubated at room temperature for 1.5 hours. This data was developed using the same antibody clone with 80137-1-PBS in a different storage buffer formulation.



Immunofluorescent analysis of (4% PFA) fixed HeLa cells using MAP2K3 antibody (80137-1-RR, Clone: 3O10) at dilution of 1:400 and CoraLite®488-Conjugated AffiniPure Goat Anti-Rabbit IgG(H+L), CL594-Phalloidin (red). DAPI (blue) This data was developed using the same antibody clone with 80137-1-PBS in a different storage buffer formulation.



WB result of MAP2K3 antibody (80137-1-RR; 1:8000; incubated at room temperature for 1.5 hours) with sh-Control and sh-MAP2K3 transfected HepG2 cells. This data was developed using the same antibody clone with 80137-1-PBS in a different storage buffer formulation.