

For Research Use Only

TUBB3-specific Recombinant antibody, PBS Only (Detector)

Catalog Number: 80128-2-PBS



Basic Information

Catalog Number:

80128-2-PBS

Concentration:

1 mg/ml

Source:

Rabbit

Isotype:

IgG

GenBank Accession Number:

NM_001197181

GeneID (NCBI):

10381

UNIPROT ID:

Q13509

Full Name:

tubulin, beta 3

Calculated MW:

55 kDa

Purification Method:

Protein A purification

CloneNo.:

250851E8

Applications

Tested Applications:

Cytometric bead array, Indirect ELISA, Sample test

Species Specificity:

human

Background Information

Storage

Storage:

Store at -80°C.

The product is shipped with ice packs. Upon receipt, store it immediately at -80°C

Storage Buffer:

PBS only, pH7.3

For technical support and original validation data for this product please contact:

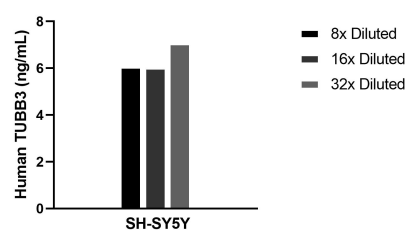
T: 4006900926

E: Proteintech-CN@ptglab.com

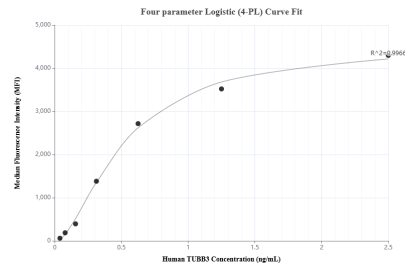
W: ptgcn.com

This product is exclusively available under Proteintech Group brand and is not available to purchase from any other manufacturer.

Selected Validation Data



The mean TUBB3 concentration was determined to be 6.4 ng/mL in SH-SY5Y cell extract based on a 1.4 mg/mL extract load.



Cytometric bead array standard curve of MP00550-2, TUBB3 Recombinant Matched Antibody Pair, PBS Only. Capture antibody: 80128-3-PBS. Detection antibody: 80128-2-PBS. Standard: SY01676. Range: 0.039-2.5 ng/mL.