

For Research Use Only



Phospho-RPS6KA1 (Ser380) Recombinant antibody, PBS Only

Catalog Number: 80108-1-PBS

Basic Information

Catalog Number: 80108-1-PBS	GenBank Accession Number: BC014966	Purification Method: Protein A purification
Size: 1mg/ml	GeneID (NCBI): 6195	CloneNo.: 7F23
Source: Rabbit	UNIPROT ID: Q15418	
Isotype: IgG	Full Name: ribosomal protein S6 kinase, 90kDa, polypeptide 1	
	Calculated MW: 735 aa, 83 kDa	
	Observed MW: 83-90 kDa	

Applications

Tested Applications:
WB, IHC, Indirect ELISA

Species Specificity:
Human, Mouse

Background Information

The 90 kDa ribosomal S6 kinases (RSK1-4) are a family of widely expressed serine/threonine kinases and play an important role in the MAPK signaling cascade and act downstream of ERK1/2 signaling. It can mediate mitogenic and stress-induced activation of the transcription factors CREB1, ETV1/ER81 and NR4A1/NUR77. RSK1 (RPS6KA1) is also designated as p90RSK associated with cellular proliferation, survival and differentiation. It has been reported that the phosphorylation of RPS6KA1 at Ser380 is involved in autophosphorylation by activation of the C-terminal kinase domain. (PMID: 16458888, 30813401, 17259979, 10679322)

Storage

Storage:
Store at -80°C.
The product is shipped with ice packs. Upon receipt, store it immediately at -80°C

Storage Buffer:
PBS Only

For technical support and original validation data for this product please contact:

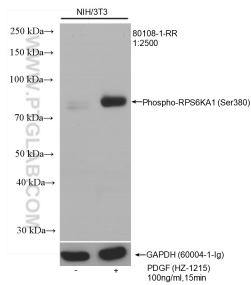
T: 4006900926

E: Proteintech-CN@ptglab.com

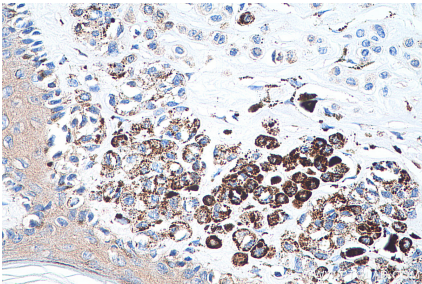
W: ptgcn.com

This product is exclusively available under Proteintech Group brand and is not available to purchase from any other manufacturer.

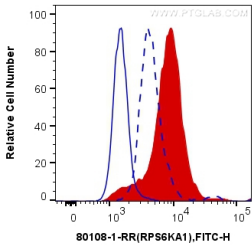
Selected Validation Data



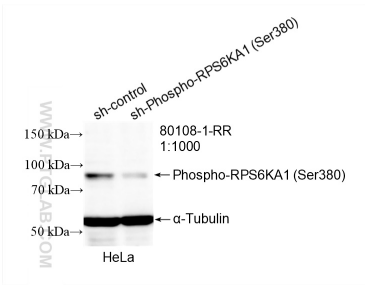
Non-treated NIH/3T3 and PDGF (HZ-1215) treated NIH/3T3 cells were subjected to SDS PAGE followed by western blot with 80108-1-RR (Phospho-RPS6KA1 (Ser380) antibody) at dilution of 1:2500 incubated at room temperature for 1.5 hours. The membrane was stripped and re-blotted with GAPDH antibody as loading control. This data was developed using the same antibody clone with 80108-1-PBS in a different storage buffer formulation.



Immunohistochemical analysis of paraffin-embedded human malignant melanoma tissue slide using 80108-1-RR (Phospho-RPS6KA1 (Ser380) antibody) at dilution of 1:2000 (under 40x lens). Heat mediated antigen retrieval with Tris-EDTA buffer (pH 9.0). This data was developed using the same antibody clone with 80108-1-PBS in a different storage buffer formulation.



1X10⁶ Jurkat cells untreated (dashed line) or treated with TPA treated (red) were intracellularly stained with 0.4 ug Anti-Human Phospho-RPS6KA1 (Ser380) (80108-1-RR, Clone:7F23) and CoraLite®488-Conjugated AffiniPure Goat Anti-Rabbit IgG(H+L) at dilution 1:1000 (red), or 0.4 ug Control Antibody (blue). Cells were fixed and permeabilized with True-Nuclear Transcription Factor Buffer Set. This data was developed using the same antibody clone



WB result of Phospho-RPS6KA1 (Ser380) antibody (80108-1-RR; 1:1000; incubated at room temperature for 1.5 hours) with sh-Control and sh-Phospho-RPS6KA1 (Ser380) transfected HeLa cells. This data was developed using the same antibody clone with 80108-1-PBS in a different storage buffer formulation.