

For Research Use Only

ACE2 Recombinant antibody, PBS Only (Capture)

Catalog Number: 80062-3-PBS



Basic Information

Catalog Number:

80062-3-PBS

Concentration:

1 mg/ml

Source:

Rabbit

Isotype:

IgG

Immunogen Catalog Number:

EG0074

GenBank Accession Number:

BC048094

GeneID (NCBI):

59272

UNIPROT ID:

Q9BYF1

Full Name:

angiotensin I converting enzyme
(peptidyl-di-peptidase A) 2

Calculated MW:

805 aa, 92 kDa

Purification Method:

Protein A purification

CloneNo.:

250363D2

Applications

Tested Applications:

Cytometric bead array, Indirect ELISA, Sample test

Species Specificity:

human

Background Information

Storage

Storage:

Store at -80°C.

The product is shipped with ice packs. Upon receipt, store it immediately at -80°C

Storage Buffer:

PBS only, pH7.3

For technical support and original validation data for this product please contact:

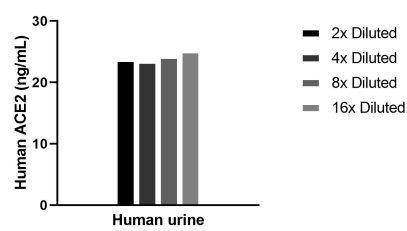
T: 4006900926

E: Proteintech-CN@ptglab.com

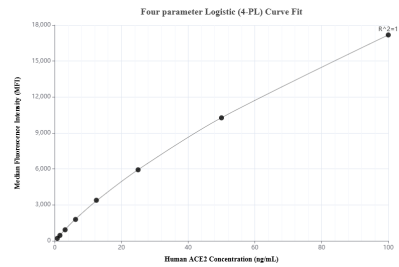
W: ptgcn.com

This product is exclusively available under Proteintech Group brand and is not available to purchase from any other manufacturer.

Selected Validation Data



The mean ACE2 concentration was determined to be 24.0 ng/mL in human urine .



Cytometric bead array standard curve of MP02357-1, ACE2 Recombinant Matched Antibody Pair, PBS Only. Capture antibody: 80062-3-PBS. Detection antibody: 80062-2-PBS. Standard: Eg0074. Range: 0.781-100 ng/mL