

For Research Use Only

# Chk1 Recombinant antibody, PBS Only

Catalog Number: 80056-2-PBS



## Basic Information

Catalog Number:

80056-2-PBS

Concentration:

1 mg/ml

Source:

Rabbit

Isotype:

IgG

GenBank Accession Number:

BC004202

GeneID (NCBI):

1111

UNIPROT ID:

O14757

Full Name:

CHK1 checkpoint homolog (S. pombe)

Calculated MW:

54 kDa

Observed MW:

55 kDa

Purification Method:

Protein A purification

CloneNo.:

2G7

## Applications

Tested Applications:

WB, IF/ICC, Indirect ELISA

Species Specificity:

human, mouse, rat

## Background Information

CHEK1(Checkpoint kinase-1) is also named as CHK1 and belongs to the protein kinase superfamily. It is implicated in a circuit in which it activates checkpoints, DNA repair and proliferating cell nuclear antigen and FANCD2 monoubiquitylation(PMID:21389083). CHEK1 protects vertebrate cells against spontaneous chromosome missegregation and is required to sustain anaphase delay when spindle function is disrupted by taxol(PMID:17276342). It has 3 isoforms produced by alternative splicing with the molecular mass of 54 kDa, 44 kDa and 50 kDa.

## Storage

Storage:

Store at -80°C.

**The product is shipped with ice packs. Upon receipt, store it immediately at -80°C**

Storage Buffer:

PBS only

For technical support and original validation data for this product please contact:

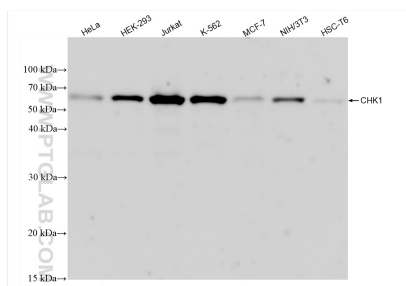
T: 4006900926

E: Proteintech-CN@ptglab.com

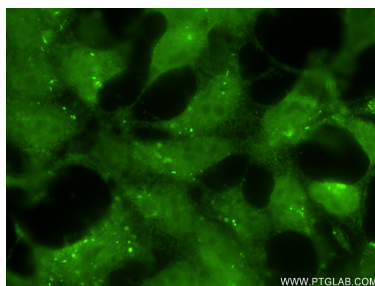
W: ptgcn.com

**This product is exclusively available under Proteintech Group brand and is not available to purchase from any other manufacturer.**

## Selected Validation Data



Various lysates were subjected to SDS PAGE followed by western blot with 80056-2-RR (Chk1 antibody) at dilution of 1:10000 incubated at room temperature for 1.5 hours. This data was developed using the same antibody clone with 80056-2-PBS in a different storage buffer formulation.



Immunofluorescent analysis of (4% PFA) fixed HEK-293T cells using Chk1 antibody (80056-2-RR, Clone: 2G7) at dilution of 1:250 and CoraLite®488-Conjugated AffiniPure Goat Anti-Rabbit IgG(H+L) (SA00013-2). This data was developed using the same antibody clone with 80056-2-PBS in a different storage buffer formulation.