

For Research Use Only

calreticulin Recombinant antibody

Catalog Number: 80017-1-RR



Basic Information

Catalog Number:

80017-1-RR

Size:

350 ug/ml

Source:

Rabbit

Isotype:

IgG

Immunogen Catalog Number:

AG26064

GenBank Accession Number:

BC002500

GeneID (NCBI):

811

UNIPROT ID:

P27797

Full Name:

calreticulin

Calculated MW:

60 kDa

Observed MW:

50-55 kDa

Purification Method:

Protein A purification

CloneNo.:

2B17

Recommended Dilutions:

WB 1:2000-1:10000

IHC 1:200-1:800

Applications

Tested Applications:

WB, IHC, ELISA

Species Specificity:

human, mouse, rat

Note-IHC: suggested antigen retrieval with TE buffer pH 9.0; (*) Alternatively, antigen retrieval may be performed with citrate buffer pH 6.0

Positive Controls:

WB : HeLa cells, NIH/3T3 cells, HSC-T6 cells, HEK-293 cells, HepG2 cells, Jurkat cells, K-562 cells

IHC : human thyroid cancer tissue, human breast cancer tissue

Background Information

CALR, also named as grp60, Erp60, HACBP, CRP55, CRTC and Calregulin, belongs to the calreticulin family. It is a molecular calcium-binding chaperone promoting folding, oligomeric assembly and quality control in the ER via the calreticulin/calnexin cycle. CALR is a ER marker. It interacts transiently with almost all of the monoglucosylated glycoproteins that are synthesized in the ER. CALR interacts with the DNA-binding domain of NR3C1 and mediates its nuclear export. The MW of CALR migrates aberrantly at 55 kDa by SDS-PAGE. Some study provided that it's a new possibility for CRT-mediated tumor immune prevention and treatment.

Storage

Storage:

Store at -20°C. Stable for one year after shipment.

Storage Buffer:

PBS with 0.02% sodium azide and 50% glycerol pH 7.3.

Aliquoting is unnecessary for -20°C storage

For technical support and original validation data for this product please contact:

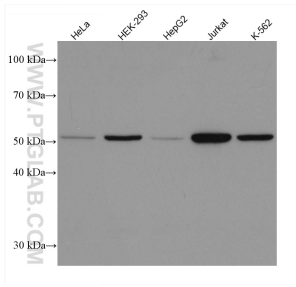
T: 4006900926

E: Proteintech-CN@ptglab.com

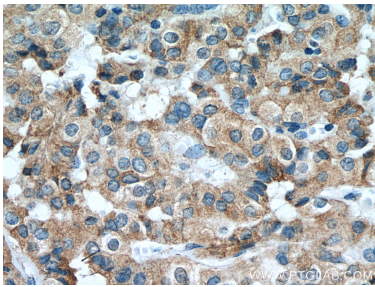
W: ptgcn.com

This product is exclusively available under Proteintech Group brand and is not available to purchase from any other manufacturer.

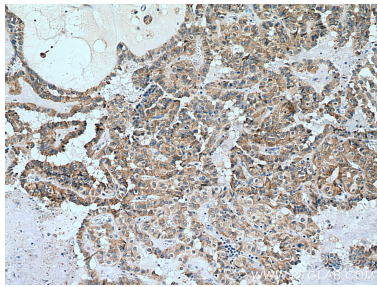
Selected Validation Data



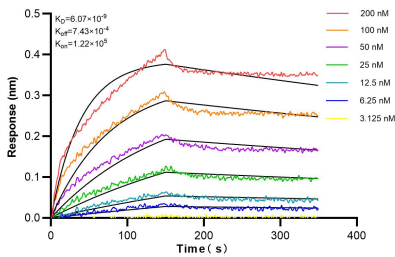
Various lysates were subjected to SDS PAGE followed by western blot with 80017-1-RR (calreticulin antibody) at dilution of 1:5000 incubated at room temperature for 1.5 hours.



Immunohistochemical analysis of paraffin-embedded human thyroid cancer tissue slide using 80017-1-RR (calreticulin antibody) at dilution of 1:400 (under 40x lens). Heat mediated antigen retrieval with Tris-EDTA buffer (pH 9.0).



Immunohistochemical analysis of paraffin-embedded human thyroid cancer tissue slide using 80017-1-RR (calreticulin antibody) at dilution of 1:400 (under 10x lens). Heat mediated antigen retrieval with Tris-EDTA buffer (pH 9.0).



Biolayer interferometry (BLI) kinetic assays of 80017-1-RR against Human calreticulin were performed. The affinity constant is 6.07 nM.