

For Research Use Only

# Osteopontin Monoclonal antibody, PBS Only (Capture/Detector)

Catalog Number: 68983-4-PBS



## Basic Information

Catalog Number: 68983-4-PBS	GenBank Accession Number: BC007016	Purification Method: Protein G purification
Concentration: 1 mg/ml	GeneID (NCBI): 6696	CloneNo.: 1B6A1
Source: Mouse	UNIPROT ID: P10451-5	
Isotype: IgG1	Full Name: secreted phosphoprotein 1	
Immunogen Catalog Number: AG19216	Calculated MW: 314 aa, 35 kDa	

## Applications

**Tested Applications:**  
Cytometric bead array, Indirect ELISA, Sample test

**Species Specificity:**  
human

## Background Information

### Storage

**Storage:**  
Store at -80°C.  
**The product is shipped with ice packs. Upon receipt, store it immediately at -80°C**

**Storage Buffer:**  
PBS Only

For technical support and original validation data for this product please contact:

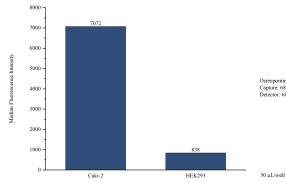
T: 4006900926

E: [Proteintech-CN@ptglab.com](mailto:Proteintech-CN@ptglab.com)

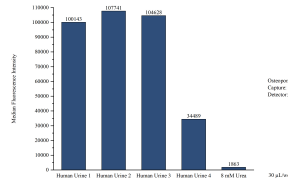
W: [ptgcn.com](http://ptgcn.com)

**This product is exclusively available under Proteintech Group brand and is not available to purchase from any other manufacturer.**

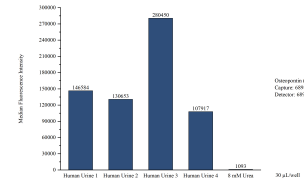
## Selected Validation Data



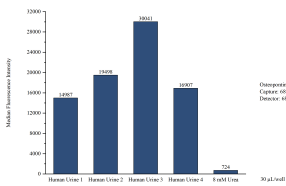
Cytometric bead array of cell line supernatant using MP50455-2, Osteopontin Monoclonal Matched Antibody Pair, PBS Only. Capture antibody: 68983-3-PBS. Detection antibody: 68983-4-PBS. Supernatant (50 µL/well) from the following cell lines were assayed: Caki-2, HEK293.



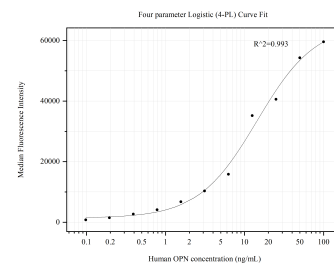
Cytometric bead array of Human urine using MP50455-2, Osteopontin Monoclonal Matched Antibody Pair, PBS Only. Capture antibody: 68983-3-PBS. Detection antibody: 68983-4-PBS. Urine of four individual healthy human donors was analyzed using MP50455-2.



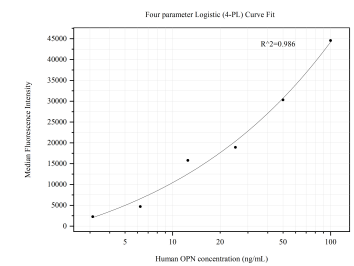
Cytometric bead array of Human urine using MP50455-3, Osteopontin Monoclonal Matched Antibody Pair, PBS Only. Capture antibody: 68983-4-PBS. Detection antibody: 68983-5-PBS. Urine of four individual healthy human donors was analyzed using MP50455-3.



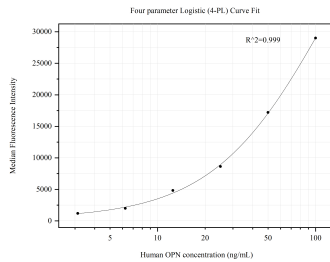
Cytometric bead array of Human urine using MP50455-4, Osteopontin Monoclonal Matched Antibody Pair, PBS Only. Capture antibody: 68983-4-PBS. Detection antibody: 68983-2-PBS. Urine of four individual healthy human donors was analyzed using MP50455-4.



Cytometric bead array standard curve of MP50455-2, OPN, SPP1 Monoclonal Matched Antibody Pair, PBS Only. Capture antibody: 68983-3-PBS. Detection antibody: 68983-4-PBS. Standard: Ag19216. Range: 0.098-100 ng/mL.



Cytometric bead array standard curve of MP50455-3, OPN, SPP1 Monoclonal Matched Antibody Pair, PBS Only. Capture antibody: 68983-4-PBS. Detection antibody: 68983-5-PBS. Standard: Ag19216. Range: 3.125-100 ng/mL.



Cytometric bead array standard curve of MP50455-4, OPN, SPP1 Monoclonal Matched Antibody Pair, PBS Only. Capture antibody: 68983-4-PBS. Detection antibody: 68983-2-PBS. Standard: Ag19216. Range: 3.125-100 ng/mL.