

For Research Use Only

LAPTM4B Monoclonal antibody

Catalog Number: 68981-3-Ig



Basic Information

Catalog Number: 68981-3-Ig	GenBank Accession Number: BC014129	Purification Method: Protein G purification
Concentration: 1000 ug/ml	GeneID (NCBI): 55353	CloneNo.: 2A11H6
Source: Mouse	UNIPROT ID: Q86VI4	Recommended Dilutions: WB: 1:2000-1:10000
Isotype: IgG1	Full Name: lysosomal protein transmembrane 4 beta	
Immunogen Catalog Number: AG38696	Calculated MW: 41 kDa	
	Observed MW: 35 kDa	

Applications

Tested Applications: WB, ELISA	Positive Controls: WB : TT cells, K-562 cells
Species Specificity: human	

Background Information

LAPTM4B, a novel oncoprotein, is associated with the prognosis of cancer, and may play important roles in the initiation, promotion and metastasis of tumors. It was initially identified as a hepatocellular carcinoma-associated gene, and was recently shown to be up-regulated in various human cancers. Some studies indicated that LAPTM4B may be an useful marker of prognosis in ovarian carcinoma and endometrial cancer. LAPTM4B belongs to the LAPTM4/LAPTM5 transporter family. It has 3 isoforms with molecular masses 41 kDa, 35 kDa and 24 kDa.

Storage

Storage:
Store at -20°C. Stable for one year after shipment.
Storage Buffer:
PBS with 0.02% sodium azide and 50% glycerol, pH7.3
Aliquoting is unnecessary for -20°C storage

For technical support and original validation data for this product please contact:

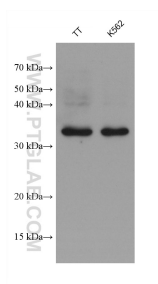
T: 4006900926

E: Proteintech-CN@ptglab.com

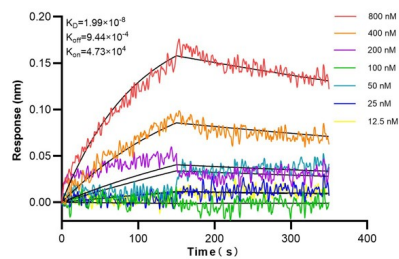
W: ptgcn.com

This product is exclusively available under Proteintech Group brand and is not available to purchase from any other manufacturer.

Selected Validation Data



Various lysates were subjected to SDS PAGE followed by western blot with 68981-3-Ig (LAPTM4B antibody) at dilution of 1:5000 incubated at room temperature for 1.5 hours.



Biolayer interferometry (BLI) kinetic assays of 68706-1-Ig against Human MMP1 were performed. The affinity constant is below 19.9 nM.