

MLXIP Monoclonal antibody

Catalog Number: 68977-1-Ig

Basic Information

Catalog Number:

68977-1-Ig

Size:

1000 µg/ml

Source:

Mouse

Isotype:

IgG2b

Immunogen Catalog Number:

AG4519

GenBank Accession Number:

BC039704

GeneID (NCBI):

22877

UNIPROT ID:

Q9HAP2

Full Name:

MLX interacting protein

Calculated MW:

919 aa, 100 kDa

Observed MW:

130 kDa

Purification Method:

Protein A purification

CloneNo.:

2E11A4

Recommended Dilutions:

WB 1:5000-1:50000

Applications

Tested Applications:

WB, ELISA

Species Specificity:

human

Positive Controls:

WB : ACHN cells, A549 cells, HEK-293 cells, Jurkat cells, K-562 cells, Mo7e cells

Background Information

MLX-interacting protein (MLXIP), after forming heterodimers with MLX, can bind to and then activate transcription from CACGTG E boxes. The N terminus of MLXIP acts as a CRM1-dependent nuclear export signal and contribute to the cytoplasmic localization of the complex, and as a binding site for 13 protein. The C terminus contains a cytoplasmic localization signal and mediates protein-protein interaction of MONDOA and MLX. The complex play a role in transcriptional activation of glycolytic target genes and glucose-responsive gene regulation. This antibody could recognize isoform1 (~110kd) and isoform3 (~69kd) of MLXIP. A prominent and specific MLXIP of approximately 130 kDa was detected. It demonstrates that MLXIP associated specifically with MLX in the cytoplasm (PMID: 11073985).

Storage

Storage:

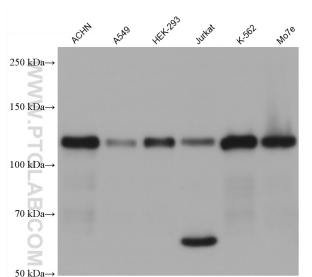
Store at -20°C. Stable for one year after shipment.

Storage Buffer:

PBS with 0.02% sodium azide and 50% glycerol pH 7.3.

Aliquoting is unnecessary for -20°C storage

Selected Validation Data



Various lysates were subjected to SDS PAGE followed by western blot with 68977-1-Ig (MLXIP antibody) at dilution of 1:10000 incubated at room temperature for 1.5 hours.