

For Research Use Only

# PPIF Monoclonal antibody, PBS Only (Capture/Detector)

Catalog Number: 68956-3-PBS



## Basic Information

Catalog Number: 68956-3-PBS	GenBank Accession Number: BC005020	Purification Method: Protein G purification
Concentration: 1 mg/ml	GeneID (NCBI): 10105	CloneNo.: 3A12B5
Source: Mouse	UNIPROT ID: P30405	
Isotype: IgG1	Full Name: peptidylprolyl isomerase F	
Immunogen Catalog Number: AG13151	Calculated MW: 22 kDa	

## Applications

**Tested Applications:**  
Cytometric bead array, Sandwich ELISA, Indirect ELISA,  
Sample test

**Species Specificity:**  
human

## Background Information

### Storage

**Storage:**  
Store at -80°C.  
**The product is shipped with ice packs. Upon receipt, store it immediately at -80°C**

**Storage Buffer:**  
PBS only, pH7.3

For technical support and original validation data for this product please contact:

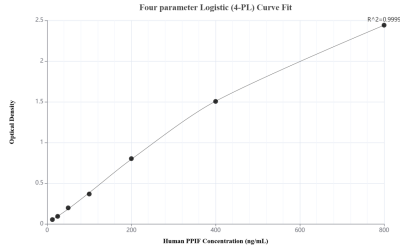
T: 4006900926

E: Proteintech-CN@ptglab.com

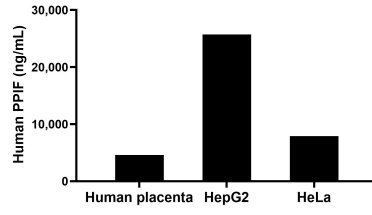
W: ptgcn.com

**This product is exclusively available under Proteintech Group brand and is not available to purchase from any other manufacturer.**

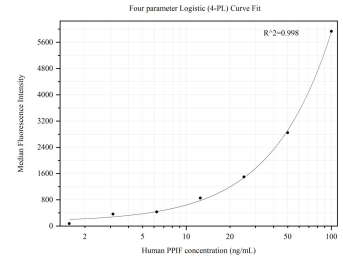
## Selected Validation Data



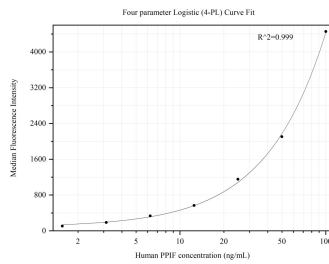
Sandwich ELISA standard curve of MP50406-2, Human PPIF Monoclonal Matched Antibody Pair - PBS only. 68956-3-PBS was coated to a plate as the capture antibody and incubated with serial dilutions of standard Ag13151. 68956-4-PBS was HRP conjugated as the detection antibody. Range: 12.5-800 ng/mL



The mean PPIF concentration was determined to be 4,606.00 ng/mL in human placenta tissue extract based on a 1.30 mg/mL extract load, 25,711.00 ng/mL in HepG2 cell extract based on a 1.80 mg/mL extract load and 7,896.00 ng/mL in HeLa cell extract based on a 1.50 mg/mL extract load.



Cytometric bead array standard curve of MP50406-2, PPIF-Specific Monoclonal Matched Antibody Pair, PBS Only. Capture antibody: 68956-3-PBS. Detection antibody: 68956-4-PBS. Standard:Ag13151. Range: 1.563-100 ng/mL



Cytometric bead array standard curve of MP50406-3, PPIF-Specific Monoclonal Matched Antibody Pair, PBS Only. Capture antibody: 68956-5-PBS. Detection antibody: 68956-3-PBS. Standard:Ag13151. Range: 1.563-100 ng/mL