

For Research Use Only

PARK7/DJ-1 Monoclonal antibody, PBS Only (Capture)

Catalog Number: 68915-1-PBS



Basic Information

Catalog Number: 68915-1-PBS	GenBank Accession Number: BC008188	Purification Method: Protein G purification
Size: 1 mg/ml	GeneID (NCBI): 11315	CloneNo.: 4E10B2
Source: Mouse	UNIPROT ID: Q99497	
Isotype: IgG1	Full Name: Parkinson disease (autosomal recessive, early onset) 7	
Immunogen Catalog Number: AG28526	Calculated MW: 189 aa, 20 kDa	
	Observed MW: 20-25 kDa	

Applications

Tested Applications:
WB, Cytometric bead array, Indirect ELISA

Species Specificity:
human, pig, rabbit

Background Information

PARK7, also named as DJ1, belongs to the peptidase C56 family. It protects cells against oxidative stress and cell death. PARK7 plays a role in regulating expression or stability of the mitochondrial uncoupling proteins SLC25A14 and SLC25A27 in dopaminergic neurons of the substantia nigra pars compacta and attenuates the oxidative stress induced by calcium entry into the neurons via L-type channels during pacemaking. It eliminates hydrogen peroxide and protects cells against hydrogen peroxide-induced cell death. PARK7 has cell-growth promoting activity and transforming activity. It may function as a redox-sensitive chaperone. Its precursor undergoes a cleavage of a C-terminal peptide and subsequent activation of protease activity in response to oxidative stress. The amino acid replace at 166 (L → P) reduces PARK7 protein stability and leads to increased degradation. The predicted MW of this protein is 20 kDa, An additional 25 kDa band can be observed due to modification (PMID: 31767755).

Storage

Storage:
Store at -80°C.
The product is shipped with ice packs. Upon receipt, store it immediately at -80°C

Storage Buffer:
PBS Only

For technical support and original validation data for this product please contact:

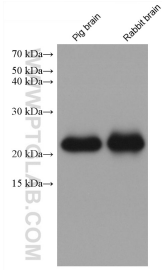
T: 4006900926

E: Proteintech-CN@ptglab.com

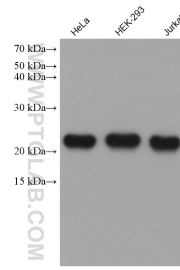
W: ptgcn.com

This product is exclusively available under Proteintech Group brand and is not available to purchase from any other manufacturer.

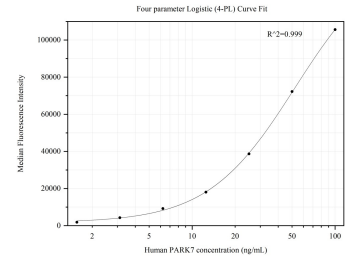
Selected Validation Data



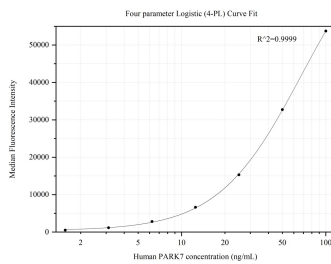
Various lysates were subjected to SDS PAGE followed by western blot with 68915-1-Ig (PARK7/DJ-1 antibody) at dilution of 1:5000 incubated at room temperature for 1.5 hours. This data was developed using the same antibody clone with 68915-1-PBS in a different storage buffer formulation.



Various lysates were subjected to SDS PAGE followed by western blot with 68915-1-Ig (PARK7/DJ-1 antibody) at dilution of 1:5000 incubated at room temperature for 1.5 hours. This data was developed using the same antibody clone with 68915-1-PBS in a different storage buffer formulation.



Cytometric bead array standard curve of MP50337-1, PARK7/DJ-1 Monoclonal Matched Antibody Pair, PBS Only. Capture antibody: 68915-1-PBS. Detection antibody: 68915-2-PBS. Standard: Ag28526. Range: 1.563-100 ng/mL.



Cytometric bead array standard curve of MP50337-2, PARK7/DJ-1 Monoclonal Matched Antibody Pair, PBS Only. Capture antibody: 68915-1-PBS. Detection antibody: 68915-3-PBS. Standard: Ag28526. Range: 1.563-100 ng/mL.