

For Research Use Only

# CD16 Monoclonal antibody, PBS Only (Detector)

Catalog Number: 68897-3-PBS



## Basic Information

Catalog Number:

68897-3-PBS

Concentration:

1 mg/ml

Source:

Mouse

Isotype:

IgG1

GenBank Accession Number:

BC017865

GeneID (NCBI):

2214

ENSEMBL Gene ID:

ENSG00000203747

UNIPROT ID:

P08637

Full Name:

Fc fragment of IgG, low affinity IIIa, receptor (CD16a)

Calculated MW:

254 aa, 29 kDa

Purification Method:

Protein G purification

CloneNo.:

2D8F2

## Applications

Tested Applications:

Cytometric bead array, Indirect ELISA, Sample test

Species Specificity:

human

## Background Information

### Storage

Storage:

Store at -80°C.

The product is shipped with ice packs. Upon receipt, store it immediately at -80°C

Storage Buffer:

PBS only, pH7.3

For technical support and original validation data for this product please contact:

T: 4006900926

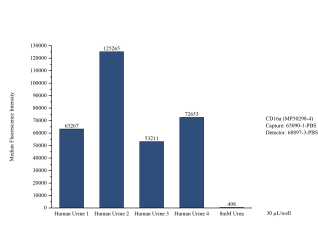
E: [Proteintech-CN@ptglab.com](mailto:Proteintech-CN@ptglab.com)

W: [ptgcn.com](http://ptgcn.com)

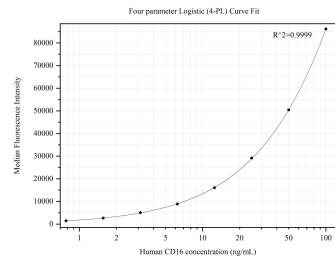
This product is exclusively available under Proteintech Group brand and is not available to purchase from any other manufacturer.

48

Selected Validation Data



Cytometric bead array of Human urine using MP50298-4, CD16a Monoclonal Matched Antibody Pair, PBS Only. Capture antibody: 65090-1-PBS. Detection antibody: 68897-3-PBS. Urine of four individual healthy human donors was analyzed using MP50298-4.



Cytometric bead array standard curve of MP50298-4, CD16 Monoclonal Matched Antibody Pair, PBS Only. Capture antibody: 65090-1-PBS. Detection antibody: 68897-3-PBS. Standard:Eg31662. Range: 0.781-100 ng/mL