

For Research Use Only

PANX1 Monoclonal antibody

Catalog Number: 68873-5-Ig



Basic Information

Catalog Number:

68873-5-Ig

Source:

Mouse

Isotype:

IgG2a

Immunogen Catalog Number:

AG33689

GenBank Accession Number:

BC016931

GeneID (NCBI):

24145

UNIPROT ID:

Q96RD7

Full Name:

pannexin 1

Calculated MW:

426 aa, 48 kDa

Observed MW:

45-50 kDa

Purification Method:

Protein A purification

CloneNo.:

3G4B10

Recommended Dilutions:

WB: 1:5000-1:50000

Applications

Tested Applications:

WB, ELISA

Species Specificity:

human, mouse

Positive Controls:

WB : SCaBER cells, MDA-MB-231 cells, HaCaT cells, SH-SY5Y cells, Jurkat cells, K-562 cells

Background Information

PANX1, also named as MRS1, belongs to the pannexin family. It plays a role as a Ca²⁺-leak channel to regulate ER Ca²⁺ homeostasis. It is a structural component of the gap junctions and the hemichannels. PANX1 induced the formation of intercellular channels with characteristics of gap junctions. PANX1 is 48-kDa protein which contains 4 transmembrane domains and cytoplasmic N and C termini. It is a mediator of find-me signal/nucleotide release from apoptotic cells.

Storage

Storage:

Store at -20°C. Stable for one year after shipment.

Storage Buffer:

PBS with 0.02% sodium azide and 50% glycerol, pH7.3

Aliquoting is unnecessary for -20°C storage

For technical support and original validation data for this product please contact:

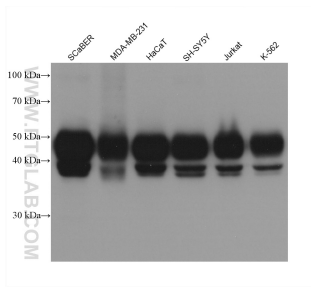
T: 4006900926

E: Proteintech-CN@ptglab.com

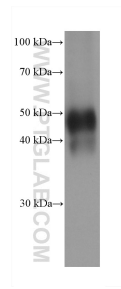
W: ptgcn.com

This product is exclusively available under Proteintech Group brand and is not available to purchase from any other manufacturer.

Selected Validation Data



Various lysates were subjected to SDS PAGE followed by western blot with 68873-5-Ig (PAX1 antibody) at dilution of 1:20000 incubated at room temperature for 1.5 hours.



Neuro-2a cells were subjected to SDS PAGE followed by western blot with 68873-5-Ig (PAX1 antibody) at dilution of 1:20000 incubated at room temperature for 1.5 hours.