

SPHK2 Monoclonal antibody

Catalog Number: 68871-4-Ig

Basic Information

Catalog Number:

68871-4-Ig

Concentration:

1000 ug/ml

Source:

Mouse

Isotype:

IgG2a

Immunogen Catalog Number:

AG10569

GenBank Accession Number:

BC010671

GeneID (NCBI):

56848

UNIPROT ID:

Q9NRA0

Full Name:

sphingosine kinase 2

Calculated MW:

618 aa, 65 kDa

Observed MW:

65-70 kDa

Purification Method:

Protein A purification

CloneNo.:

2B5G5

Recommended Dilutions:

WB 1:5000-1:50000

Applications

Tested Applications:

WB, ELISA

Species Specificity:

human, mouse, rat

Positive Controls:

WB : LNCaP cells, HT-29 cells, Caco-2 cells, Jurkat cells, MOLT-4 cells, MJ cells, J774A.1 cells, Rat brain tissue, Mouse brain tissue

Background Information

SPHK2(Sphingosine kinase 2) is also named as SK2, SPIK2 and catalyzes the phosphorylation of sphingosine to form sphingosine 1-phosphate (SPP), a lipid mediator with both intra- and extracellular functions. SPHK2 associates with HDAC1 and HDAC2 in repressor complexes and is selectively enriched at the promoters of the genes encoding the cyclin-dependent kinase inhibitor p21 or the transcriptional regulator c-fos, where it enhanced local histone H3 acetylation and transcription. SphK2 is a ~66kDa protein that is most abundantly expressed in the liver and heart(PMID:19168577). SphK2 has two splice variants, which are the 68-kDa SphK2-S and the NH2-terminal extended 72-kDa SphK2-L (PMID:17974990).

Storage

Storage:

Store at -20°C. Stable for one year after shipment.

Storage Buffer:

PBS with 0.02% sodium azide and 50% glycerol, pH7.3

Aliquoting is unnecessary for -20°C storage

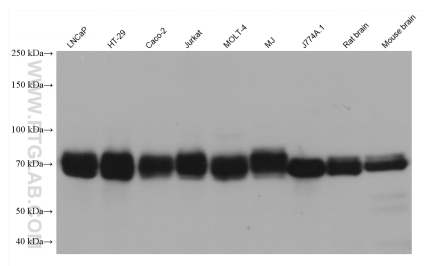
For technical support and original validation data for this product please contact:

T: 4006900926

E: Proteintech-CN@ptglab.comW: ptgcn.com

This product is exclusively available under Proteintech Group brand and is not available to purchase from any other manufacturer.

Selected Validation Data



Various lysates were subjected to SDS PAGE followed by western blot with 68871-4-Ig (SPHK2 antibody) at dilution of 1:10000 incubated at room temperature for 1.5 hours.