

For Research Use Only

# Cytokeratin 7 Monoclonal antibody, PBS Only (Detector)

Catalog Number: 68859-2-PBS



## Basic Information

Catalog Number:

68859-2-PBS

Concentration:

1 mg/ml

Source:

Mouse

Isotype:

IgG1

Immunogen Catalog Number:

AG17703

GenBank Accession Number:

BC002700

GeneID (NCBI):

3855

UNIPROT ID:

P08729

Full Name:

keratin 7

Calculated MW:

469 aa, 51 kDa

Purification Method:

Protein G purification

CloneNo.:

2C11G9

## Applications

Tested Applications:

Cytometric bead array, Sandwich ELISA, Indirect ELISA, Sample test

Species Specificity:

human

## Background Information

### Storage

Storage:

Store at -80°C.

The product is shipped with ice packs. Upon receipt, store it immediately at -80°C

Storage Buffer:

PBS Only

For technical support and original validation data for this product please contact:

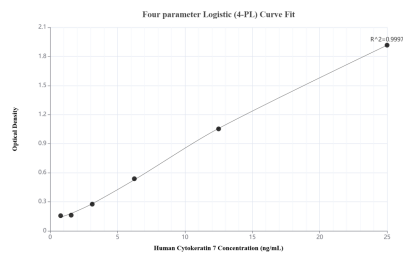
T: 4006900926

E: [Proteintech-CN@ptglab.com](mailto:Proteintech-CN@ptglab.com)

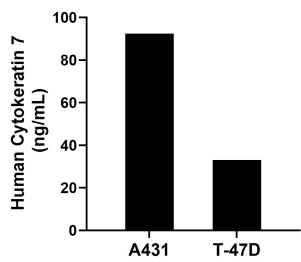
W: [ptgcn.com](http://ptgcn.com)

This product is exclusively available under Proteintech Group brand and is not available to purchase from any other manufacturer.

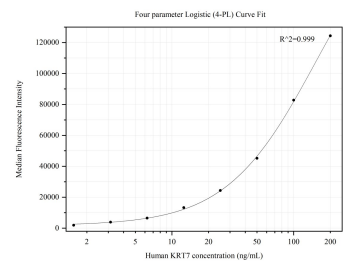
## Selected Validation Data



Sandwich ELISA standard curve of MP50253-1, Human Cytokeratin 7 Monoclonal Matched Antibody Pair - PBS only. 68859-1-PBS was coated to a plate as the capture antibody and incubated with serial dilutions of standard Ag17703. 68859-2-PBS was HRP conjugated as the detection antibody. Range: 0.781-25 ng/mL



The mean Cytokeratin 7 concentration was determined to be 92.40 ng/mL in A431 cell extract based on a 1.50 mg/mL extract load and 33.00 ng/mL in T-47D cell extract based on a 1.80 mg/mL extract load.



Cytometric bead array standard curve of MP50253-1, KRT7 Monoclonal Matched Antibody Pair, PBS Only. Capture antibody: 68859-1-PBS. Detection antibody: 68859-2-PBS. Standard: Ag17703. Range: 1.563-200 ng/mL.