

For Research Use Only

CLCC1 Monoclonal antibody, PBS Only

Catalog Number: 68853-7-PBS



Basic Information

Catalog Number: 68853-7-PBS	GenBank Accession Number: BC002939	Purification Method: Protein G purification
Concentration: 1 mg/ml	GeneID (NCBI): 23155	CloneNo.: 3C4B4
Source: Mouse	UNIPROT ID: Q96S66	
Isotype: IgG1	Full Name: chloride channel CLIC-like 1	
Immunogen Catalog Number: AG24682	Calculated MW: 551 aa, 62 kDa	
	Observed MW: 50-60 kDa	

Applications

Tested Applications:
WB, Indirect ELISA

Species Specificity:
human

Background Information

CLCC1, also known as MCLC, is a transmembrane protein that localizes to intracellular compartments, including endoplasmic reticulum (ER), and it functions as a chloride channel (PMID: 11279057). It has been shown that loss of CLCC1 results in ER Stress, misfolded protein accumulation, and neurodegeneration (PMID: 25698737). CLCC1 forms homomultimer in the ER membrane and is a pore-forming component of an anion channel. Studies found that disruption of ER ion homeostasis maintained by CLCC1 is one of the causes of neurodegenerative diseases, such as ALS (amyotrophic lateral sclerosis) (PMID: 37142673).

Storage

Storage:
Store at -80°C.
The product is shipped with ice packs. Upon receipt, store it immediately at -80°C

Storage Buffer:
PBS Only

For technical support and original validation data for this product please contact:

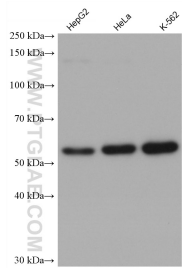
T: 4006900926

E: Proteintech-CN@ptglab.com

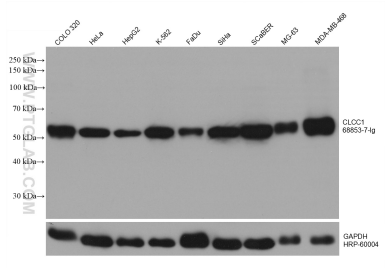
W: ptgcn.com

This product is exclusively available under Proteintech Group brand and is not available to purchase from any other manufacturer.

Selected Validation Data



Various lysates were subjected to SDS PAGE followed by western blot with 68853-7-Ig (CLCC1 antibody) at dilution of 1:4000 incubated at room temperature for 1.5 hours. This data was developed using the same antibody clone with 68853-7-PBS in a different storage buffer formulation.



Various lysates were subjected to SDS PAGE followed by western blot with 68853-7-Ig (CLCC1 antibody) at dilution of 1:10000 incubated at room temperature for 1.5 hours. This data was developed using the same antibody clone with 68853-7-PBS in a different storage buffer formulation.