

For Research Use Only

# CORO1C Monoclonal antibody

Catalog Number: 68846-1-Ig



## Basic Information

Catalog Number:

68846-1-Ig

Size:

1000 ug/ml

Source:

Mouse

Isotype:

IgG2b

Immunogen Catalog Number:

AG6546

GenBank Accession Number:

BC002342

GeneID (NCBI):

23603

UNIPROT ID:

Q9ULV4

Full Name:

coronin, actin binding protein, 1C

Calculated MW:

53 kDa

Observed MW:

57 kDa

Purification Method:

Protein A purification

CloneNo.:

1B10G4

Recommended Dilutions:

WB 1:5000-1:50000

IF/ICC 1:200-1:800

## Applications

Tested Applications:

WB, IF/ICC, ELISA

Species Specificity:

human, mouse, rat

Positive Controls:

WB : hTERT-RPE1 cells, HSC-T6 cells, NIH/3T3 cells, 4T1 cells, MDA-MB-231 cells, A549 cells, A431 cells, HepG2 cells

IF/ICC : SH-SY5Y cells,

## Background Information

CORO1C also known as HCRNN4, belongs to the WD repeat coronin family. CORO1C contains 5 N-terminal trp-aspartate (WD) repeats and a C-terminal coiled-coil motif. It was reported to regulate actin - dependent processes by assembling F-actin. CORO1C promoted the invasion of breast cancer and glioma cells by specifically promoting the formation of invadopodia (PMID: 30974047).

## Storage

Storage:

Store at -20°C. Stable for one year after shipment.

Storage Buffer:

PBS with 0.02% sodium azide and 50% glycerol pH 7.3.

Aliquoting is unnecessary for -20°C storage

For technical support and original validation data for this product please contact:

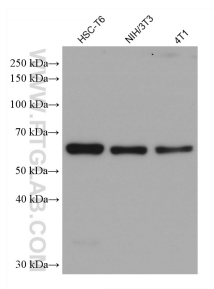
T: 4006900926

E: [Proteintech-CN@ptglab.com](mailto:Proteintech-CN@ptglab.com)

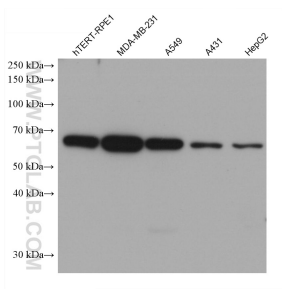
W: [ptgcn.com](http://ptgcn.com)

This product is exclusively available under Proteintech Group brand and is not available to purchase from any other manufacturer.

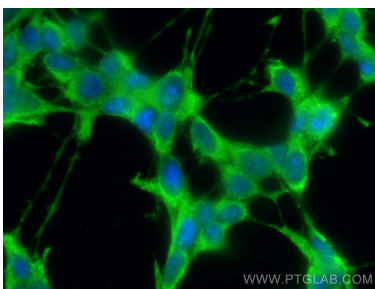
## Selected Validation Data



Various lysates were subjected to SDS PAGE followed by western blot with 68846-1-Ig (CORO1C antibody) at dilution of 1:20000 incubated at room temperature for 1.5 hours.



Various lysates were subjected to SDS PAGE followed by western blot with 68846-1-Ig (CORO1C antibody) at dilution of 1:20000 incubated at room temperature for 1.5 hours.



Immunofluorescent analysis of (-20°C Ethanol) fixed SH-SY5Y cells using CORO1C antibody (68846-1-Ig, Clone: 1B10G4 ) at dilution of 1:400 and Multi-rAb CoraLite ® Plus 488-Goat Anti-Mouse Recombinant Secondary Antibody (H+L) (RGAM002).