

For Research Use Only

CPA1 Monoclonal antibody

Catalog Number: 68826-1-Ig



Basic Information

Catalog Number: 68826-1-Ig	GenBank Accession Number: BC005279	Purification Method: Protein G purification
Size: 1000 ug/ml	GeneID (NCBI): 1357	CloneNo.: 2H2E8
Source: Mouse	UNIPROT ID: P15085	Recommended Dilutions: WB 1:5000-1:50000 IF-P 1:200-1:800
Isotype: IgG1	Full Name: carboxypeptidase A1 (pancreatic)	
Immunogen Catalog Number: AG8579	Calculated MW: 419 aa, 47 kDa	
	Observed MW: 47 kDa	

Applications

Tested Applications: WB, IF-P, ELISA	Positive Controls:
Species Specificity: human, mouse, rat, pig	WB : pig pancreas tissue, rat pancreas tissue, mouse pancreas tissue
	IF-P : mouse pancreas tissue,

Background Information

CPA1(Carboxypeptidase A1) is also named as CPA and belongs to the the peptidase M14 family. CPA1 is one of the genes whose expression in the pancreas and the protein which it encodes is synthesized as an inactive precursor, proCPA1, which is processed to the active enzyme by the proteolytic removal of the 95-amino acid N-terminal prodomain. The mature CPA1 is not secreted and is trapped and degraded intracellularly(PMID:8639628). This antibody is sepicific to CPA1.

Storage

Storage:
Store at -20°C. Stable for one year after shipment.
Storage Buffer:
PBS with 0.02% sodium azide and 50% glycerol pH 7.3.
Aliquoting is unnecessary for -20° C storage

For technical support and original validation data for this product please contact:

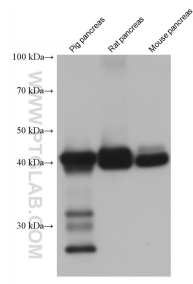
T: 4006900926

E: Proteintech-CN@ptglab.com

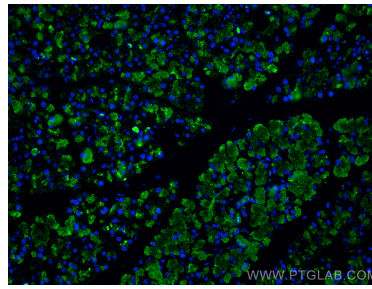
W: ptgcn.com

This product is exclusively available under Proteintech Group brand and is not available to purchase from any other manufacturer.

Selected Validation Data



Various lysates were subjected to SDS PAGE followed by western blot with 68826-1-Ig (CPA1 antibody) at dilution of 1:10000 incubated at room temperature for 1.5 hours.



Immunofluorescent analysis of (4% PFA) fixed paraffin-embedded mouse pancreas tissue using CPA1 antibody (68826-1-Ig, Clone: 2H2E8) at dilution of 1:400 and CoraLite®488-Conjugated Goat Anti-Mouse IgG(H+L) (SA00013-1). Heat mediated antigen retrieval with Tris-EDTA buffer (pH 9.0).