

For Research Use Only

# THOC3 Monoclonal antibody, PBS Only (Detector)



Catalog Number: 68812-2-PBS

## Basic Information

Catalog Number:

68812-2-PBS

Size:

1 mg/ml

Source:

Mouse

Isotype:

IgG1

Immunogen Catalog Number:

AG35578

GenBank Accession Number:

BC006849

GeneID (NCBI):

84321

UNIPROT ID:

Q96J01

Full Name:

THO complex 3

Calculated MW:

327 aa, 36 kDa

Purification Method:

Protein G Magarose purification

CloneNo.:

1E6C4

## Applications

Tested Applications:

Indirect ELISA, Cytometric bead array

Species Specificity:

Human

## Background Information

### Storage

Storage:

Store at -80°C.

The product is shipped with ice packs. Upon receipt, store it immediately at -80°C

Storage Buffer:

PBS Only

For technical support and original validation data for this product please contact:

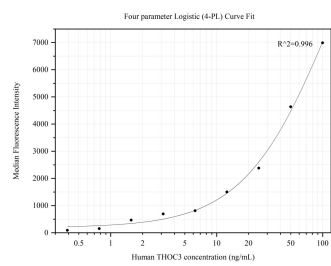
T: 4006900926

E: [Proteintech-CN@ptglab.com](mailto:Proteintech-CN@ptglab.com)

W: [ptgcn.com](http://ptgcn.com)

This product is exclusively available under Proteintech Group brand and is not available to purchase from any other manufacturer.

## Selected Validation Data



Cytometric bead array standard curve of MP50185-1, THOC3 Monoclonal Matched Antibody Pair, PBS Only. Capture antibody: 68812-1-PBS. Detection antibody: 68812-2-PBS. Standard:Ag35578. Range: 0.391-100 ng/mL.