

For Research Use Only

PARK7/DJ-1 Monoclonal antibody, PBS Only (Detector)

Catalog Number: 68802-1-PBS



Basic Information

Catalog Number:

68802-1-PBS

Size:

1 mg/ml

Source:

Mouse

Isotype:

IgG2a

Immunogen Catalog Number:

AG2287

GenBank Accession Number:

BC008188

GeneID (NCBI):

11315

UNIPROT ID:

Q99497

Full Name:

Parkinson disease (autosomal recessive, early onset) 7

Calculated MW:

189 aa, 20 kDa

Purification Method:

Protein A purification

CloneNo.:

1E5C3

Applications

Tested Applications:

Sandwich ELISA, Indirect ELISA, Sample test

Species Specificity:

human

Background Information

Storage

Storage:

Store at -80°C.

The product is shipped with ice packs. Upon receipt, store it immediately at -80°C

Storage Buffer:

PBS Only

For technical support and original validation data for this product please contact:

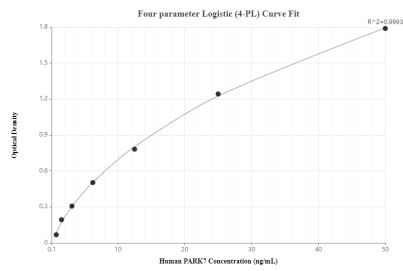
T: 4006900926

E: Proteintech-CN@ptglab.com

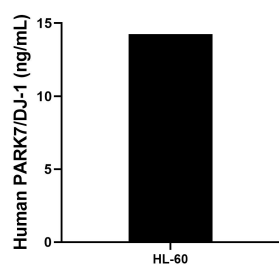
W: ptgcn.com

This product is exclusively available under Proteintech Group brand and is not available to purchase from any other manufacturer.

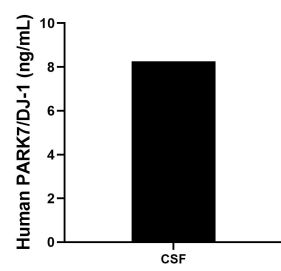
Selected Validation Data



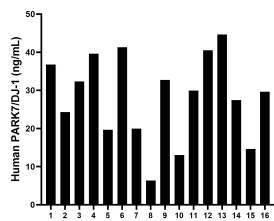
Sandwich ELISA standard curve of MP80004-1, Human PARK7/DJ-1 Monoclonal Matched Antibody Pair - PBS only. 82913-1-PBS was coated to a plate as the capture antibody and incubated with serial dilutions of standard Ag2287. 68802-1-PBS was HRP conjugated as the detection antibody. Range: 0.39-25 ng/mL



The mean human PARK7/DJ-1 concentration was determined to be 14.25 ng/mL in HL-60 cell extract based on a 4.3 mg/mL extract load.



The human PARK7/DJ-1 concentration of Human cerebrospinal fluid (CSF) samples were determined to be 8.3 ng/mL



Serum of sixteen individual healthy human donors were measured. The human PARK7/DJ-1 concentration of detected samples was determined to be 28.3 ng/mL with a range of 6.3 - 44.6 ng/mL