

For Research Use Only

RIPK3 Monoclonal antibody, PBS Only (Detector)

Catalog Number: 68786-2-PBS



Basic Information

Catalog Number:

68786-2-PBS

Concentration:

1000 µg/ml

Source:

Mouse

Isotype:

IgG1

Immunogen Catalog Number:

AG11759

GenBank Accession Number:

BC062584

GeneID (NCBI):

11035

UNIPROT ID:

Q9Y572

Full Name:

receptor-interacting serine-threonine kinase 3

Calculated MW:

518 aa, 57 kDa

Observed MW:

57 kDa

Purification Method:

Protein A purification

CloneNo.:

1F7B3

Applications

Tested Applications:

WB, Cytometric bead array, Indirect ELISA

Species Specificity:

human, mouse, rat

Background Information

RIPK3, also named as RIP3, a Ser/Thr kinase of RIP (Receptor Interacting Protein) family, is recruited to the TNFR1 signaling complex through RIP and has been shown to mediate apoptosis induction and NF-κB activation. RIPK3 is a nucleocytoplasmic shuttling protein and its unconventional nuclear localization signal (NLS, 442-472 aa) is sufficient to trigger apoptosis in the nucleus (PMID:18533105). It has 3 isoforms produced by alternative splicing. RIPK3 might form a homodimer within cells, and its apoptotic activity may not be required for this dimerization (PMID:18533105).

Storage

Storage:

Store at -80°C.

The product is shipped with ice packs. Upon receipt, store it immediately at -80°C

Storage Buffer:

PBS Only

For technical support and original validation data for this product please contact:

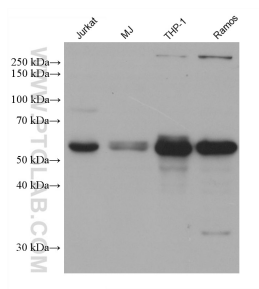
T: 4006900926

E: Proteintech-CN@ptglab.com

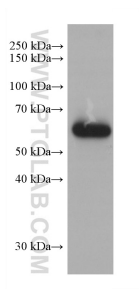
W: ptgcn.com

This product is exclusively available under Proteintech Group brand and is not available to purchase from any other manufacturer.

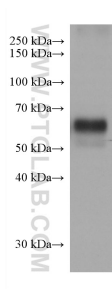
Selected Validation Data



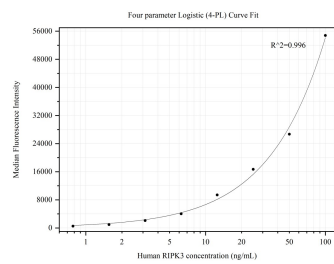
Various lysates were subjected to SDS PAGE followed by western blot with 68786-2-Ig (RIPK3 antibody) at dilution of 1:5000 incubated at room temperature for 1.5 hours. This data was developed using the same antibody clone with 68786-2-PBS in a different storage buffer formulation.



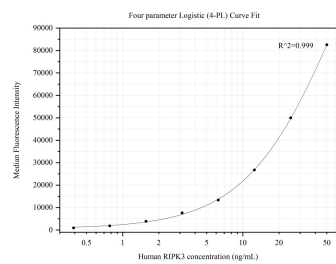
HT-29 cells were subjected to SDS PAGE followed by western blot with 68786-2-Ig (RIPK3 antibody) at dilution of 1:5000 incubated at room temperature for 1.5 hours. This data was developed using the same antibody clone with 68786-2-PBS in a different storage buffer formulation.



SK-BR-3 cells were subjected to SDS PAGE followed by western blot with 68786-2-Ig (RIPK3 antibody) at dilution of 1:5000 incubated at room temperature for 1.5 hours. This data was developed using the same antibody clone with 68786-2-PBS in a different storage buffer formulation.



Cytometric bead array standard curve of MP50152-1, RIPK3 Monoclonal Matched Antibody Pair, PBS Only. Capture antibody: 68786-1-PBS. Detection antibody: 68786-2-PBS. Standard:Ag11759. Range: 0.781-100 ng/mL.



Cytometric bead array standard curve of MP50152-3, RIPK3 Monoclonal Matched Antibody Pair, PBS Only. Capture antibody: 68786-3-PBS. Detection antibody: 68786-2-PBS. Standard:Ag11759. Range: 0.391-50 ng/mL.