

For Research Use Only

GDF-15 Monoclonal antibody, PBS Only (Capture/Detector)

Catalog Number: 68768-1-PBS



Basic Information

Catalog Number: 68768-1-PBS	GenBank Accession Number: BC008962	Purification Method: Protein G purification
Concentration: 1mg/ml	GeneID (NCBI): 9518	CloneNo.: 1B1H4
Source: Mouse	UNIPROT ID: Q99988	
Isotype: IgG1	Full Name: growth differentiation factor 15	
Immunogen Catalog Number: AG33750	Calculated MW: 34 kDa	
	Observed MW: 34 kDa	

Applications

Tested Applications:
WB, IHC, IF/ICC, Sandwich ELISA, Indirect ELISA,
Sample test

Species Specificity:
human

Background Information

Growth differentiation factor 15 (GDF15), also known as macrophage inhibitory cytokine-1 (MIC-1), is a protein of the transforming growth factor beta (TGF β) superfamily that regulates inflammatory and apoptotic pathways in injured tissues and during disease processes. GDF15 is a stress-induced cytokine and associated with hypoxia, inflammation and oxidative stress, it is also released from endothelial cells after stimulation with pro-inflammatory cytokines. GDF15 has been suggested as a target and biomarker for cardiovascular disease as it plays a cardioprotective role in the adult heart. GDF15 is highly expressed in the placenta. GDF15 is known to be involved in human embryo development and necessary for the maintenance of pregnancy. GDF15 is also produced by adipocytes in response to oxidative stress, a well-known factor associated with preeclampsia.

Storage

Storage:
Store at -80°C.
The product is shipped with ice packs. Upon receipt, store it immediately at -80°C

Storage Buffer:
PBS only, pH7.3

For technical support and original validation data for this product please contact:

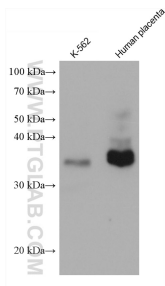
T: 4006900926

E: Proteintech-CN@ptglab.com

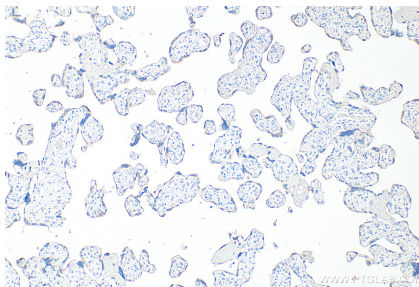
W: ptgcn.com

This product is exclusively available under Proteintech Group brand and is not available to purchase from any other manufacturer.

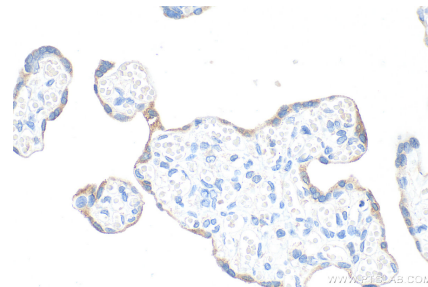
Selected Validation Data



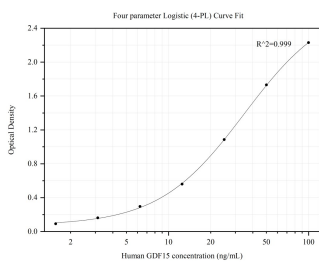
Various lysates were subjected to SDS PAGE followed by western blot with 68768-1-Ig (GDF15 antibody) at dilution of 1:20000 incubated at room temperature for 1.5 hours. This data was developed using the same antibody clone with 68768-1-PBS in a different storage buffer formulation.



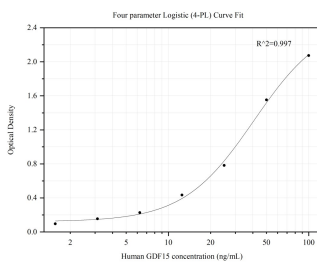
Immunohistochemical analysis of paraffin-embedded human placenta tissue slide using 6B768-1-g (GDF-15 antibody) at dilution of 1:1000 (under 10x lens). Heat mediated antigen retrieval with Tris-EDTA buffer (pH 9.0). This data was developed using the same antibody clone with 6B768-1-PBS in a different storage buffer formulation.



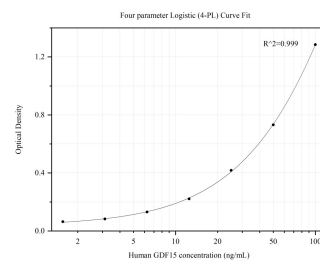
Immunohistochemical analysis of paraffin-embedded human placenta tissue slide using 68768-1-Ig (GDF-15 antibody) at dilution of 1:1000 (under 40x lens). Heat mediated antigen retrieval with Tris-EDTA buffer (pH 9.0). This data was developed using the same antibody clone with 68768-1-PBS in a different storage buffer formulation.



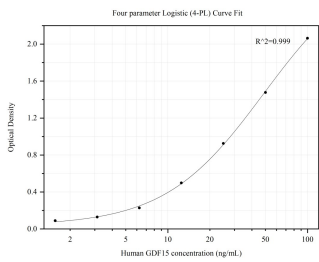
Sandwich ELISA standard curve of MP50133-1, GDF15 Monoclonal Matched Antibody Pair, PBS Only. Capture antibody: 68768-3-PBS. Detection antibody: HRP-conjugated 68768-1-PBS. Standard:Ag33750. Range: 1.563-100 ng/mL



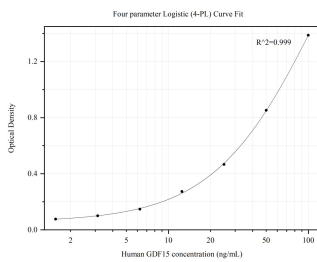
Sandwich ELISA standard curve of MP50133-2, GDF15 Monoclonal Matched Antibody Pair, PBS Only. Capture antibody: 68768-4-PBS. Detection antibody: HRP-conjugated 68768-1-PBS. Standard: Ag33750. Range: 1.563-100 ng/mL



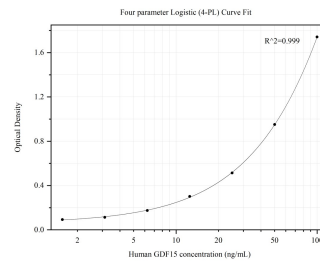
Sandwich ELISA standard curve of MP50133-4, GDF15 Monoclonal Matched Antibody Pair, PBS Only. Capture antibody: 68768-7-PBS. Detection antibody: HRP-conjugated 68768-1-PBS. Standard: Ag33750. Range: 1.563-100 ng/mL



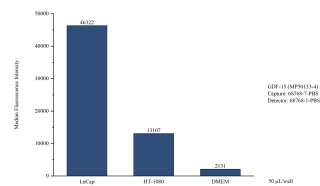
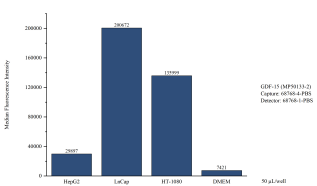
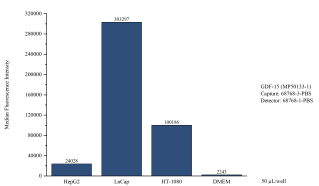
Sandwich ELISA standard curve of MP50133-5, GDF15 Monoclonal Matched Antibody Pair, PBS Only. Capture antibody: 68768-1-PBS. Detection antibody: HRP-conjugated 68768-2-PBS. Standard: Ag33750. Range: 1.563-100 ng/mL.



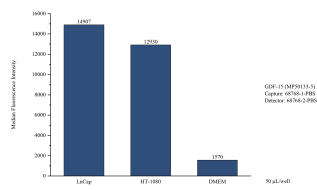
Sandwich ELISA standard curve of MP50133-8, GDF15 Monoclonal Matched Antibody Pair, PBS Only. Capture antibody: 68768-5-PBS. Detection antibody: HRP-conjugated 68768-1-PBS. Standard: Ag33750. Range: 1.563-100 ng/mL.



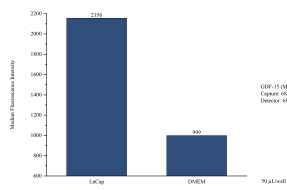
Sandwich ELISA standard curve of MP50133-9, GDF15 Monoclonal Matched Antibody Pair, PBS Only. Capture antibody: 68768-6-PBS. Detection antibody: HRP-conjugated 68768-1-PBS. Standard: Ag33750. Range: 1.563-100 ng/mL



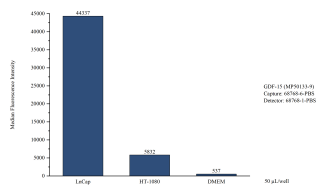
Cytometric bead array of cell line supernatant using MP50133-1, GDF-15 Monoclonal Matched Antibody Pair, PBS Only. Capture antibody: 68768-3-PBS. Detection antibody: 68768-1-PBS. Supernatant (50 μ L/well) from the following cell lines were assayed: HepG2, LnCap, HT-1080. Complete culture medium was served as blank control.



Cytometric bead array of cell line supernatant using MP50133-2, GDF-15 Monoclonal Matched Antibody Pair, PBS Only. Capture antibody: 68768-4-PBS. Detection antibody: 68768-1-PBS. Supernatant (50 μ L/well) from the following cell lines were assayed: HepG2, LnCap, HT-1080. Complete culture medium was served as blank control.



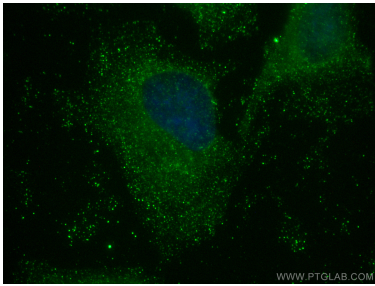
Cytometric bead array of cell line supernatant using MP50133-4, GDF-15 Monoclonal Matched Antibody Pair, PBS Only. Capture antibody: 68768-7-PBS. Detection antibody: 68768-1-PBS. Supernatant (50 μ L/well) from the following cell lines were assayed: LnCap, HT-1080. Complete culture medium was served as blank control.



Cytometric bead array of cell line supernatant using MP50133-5, GDF-15 Monoclonal Matched Antibody Pair, PBS Only. Capture antibody: 68768-1-PBS. Detection antibody: 68768-2-PBS. Supernatant (50 μ L/well) from the following cell lines were assayed: LnCap, HT-1080. Complete culture medium was served as blank control.

Cytometric bead array of LnCap cells supernatant using MP50133-8, GDF-15 Monoclonal Matched Antibody Pair, PBS Only. Capture antibody: 68768-5-PBS. Detection antibody: 68768-1-PBS. Complete culture medium was served as blank control.

Cytometric bead array of cell line supernatant using MP50133-9, GDF-15 Monoclonal Matched Antibody Pair, PBS Only. Capture antibody: 68768-6-PBS. Detection antibody: 68768-1-PBS. Supernatant (50 μ L/well) from the following cell lines were assayed: LnCap, HT-1080. Complete culture medium was served as blank control.



Immunofluorescent analysis of (-20°C Ethanol) fixed HeLa cells using GDF15 antibody (68768-1-Ig, Clone: 1B1H4) at dilution of 1:400 and Multi-rAb CoraLite @ Plus 488-Goat Anti-Mouse Recombinant Secondary Antibody (H+L) (RGAM002). This data was developed using the same antibody clone with 68768-1-PBS in a different storage buffer formulation.