

For Research Use Only

SAMHD1 Monoclonal antibody, PBS Only (Detector)

Catalog Number: 68732-2-PBS



Basic Information

Catalog Number:

68732-2-PBS

Source:

Mouse

Isotype:

IgG1

Immunogen Catalog Number:

AG18766

GenBank Accession Number:

BC036450

GeneID (NCBI):

25939

UNIPROT ID:

Q9Y3Z3

Full Name:

SAM domain and HD domain 1

Calculated MW:

626 aa, 72 kDa

Purification Method:

Protein G purification

CloneNo.:

2D11A10

Applications

Tested Applications:

Sandwich ELISA, Indirect ELISA

Species Specificity:

human

Background Information

Storage

Storage:

Store at -80°C.

The product is shipped with ice packs. Upon receipt, store it immediately at -80°C

Storage Buffer:

PBS only, pH7.3

For technical support and original validation data for this product please contact:

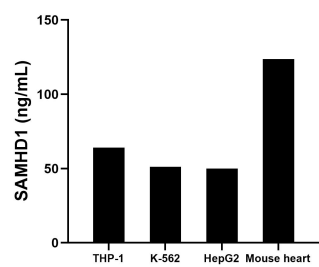
T: 4006900926

E: Proteintech-CN@ptglab.com

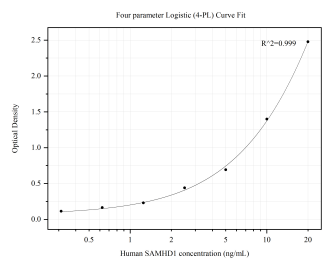
W: ptgcn.com

This product is exclusively available under Proteintech Group brand and is not available to purchase from any other manufacturer.

Selected Validation Data



The mean SAMHD1 concentration was determined to be 64.03 ng/mL in THP-1 cell extract based on a 3.40 mg/mL extract load, 51.12 ng/mL in K-562 cell extract based on a 3.00 mg/mL extract load, 49.98 ng/mL in HepG2 cell extract based on a 0.90 mg/mL extract load and 123.68 ng/mL in mouse heart tissue extract based on a 6.90 mg/mL extract load.



Sandwich ELISA standard curve of MP50020-1, SAMHD1 Monoclonal Matched Antibody Pair, PBS Only. Capture antibody: 68732-1-PBS. Detection antibody: HRP-conjugated 68732-2-PBS. Standard: Ag18766. Range: 0.313-20 ng/mL.