

For Research Use Only

# IL-4 Monoclonal antibody, PBS Only (Detector)

Catalog Number: 68728-2-PBS



## Basic Information

Catalog Number:

68728-2-PBS

Concentration:

1mg/ml

Source:

Mouse

Isotype:

IgG1

Immunogen Catalog Number:

HZ-1004

GenBank Accession Number:

GeneID (NCBI):

3565

Full Name:

interleukin 4

Purification Method:

Protein G purification

CloneNo.:

1A8A6

## Applications

Tested Applications:

Sandwich ELISA, Indirect ELISA, Sample test

Species Specificity:

human

## Background Information

### Storage

Storage:

Store at -80°C.

The product is shipped with ice packs. Upon receipt, store it immediately at -80°C

Storage Buffer:

100% PBS pH 7.3

For technical support and original validation data for this product please contact:

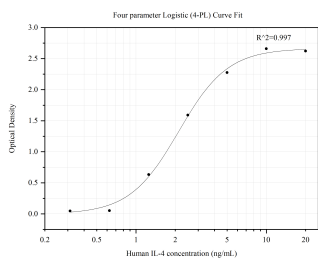
T: 4006900926

E: [Proteintech-CN@ptglab.com](mailto:Proteintech-CN@ptglab.com)

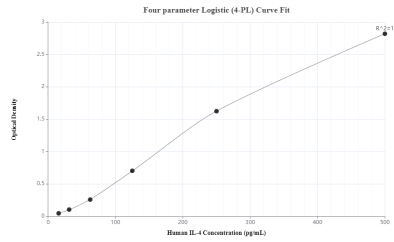
W: [ptgcn.com](http://ptgcn.com)

This product is exclusively available under Proteintech Group brand and is not available to purchase from any other manufacturer.

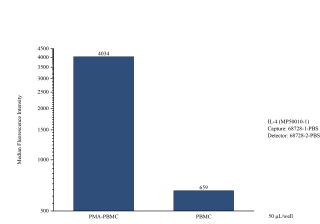
Selected Validation Data



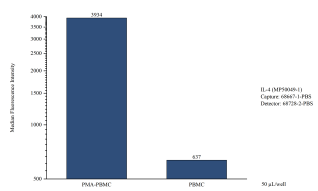
Sandwich ELISA standard curve of MP50010-1, IL-4 Monoclonal Matched Antibody Pair, PBS Only. Capture antibody: 68728-1-PBS. Detection antibody: HRP-conjugated 68728-2-PBS. Standard: HZ-1004. Range: 0.313-20 ng/mL



Sandwich ELISA standard curve of MP50049-1, IL-4 Monoclonal Matched Antibody Pair, PBS Only. Capture antibody: 68667-1-PBS. Detection antibody: 68728-2-PBS. Standard: HZ-1004. Range: 15.6-500 pg/mL



Cytometric bead array of Human peripheral blood mononuclear cells (PBMC) supernatant using MP50010-1, IL-4 Monoclonal Matched Antibody Pair, PBS Only. Capture antibody: 68728-1-PBS. Detection antibody: 68728-2-PBS. PBMC were cultured unstimulated or stimulated with 1 µg/mL PMA for 48 hours. 50 µL of the supernatant was analyzed using MP50010-1.



Cytometric bead array of Human peripheral blood mononuclear cells (PBMC) supernatant using MP50049-1, IL-4 Monoclonal Matched Antibody Pair, PBS Only. Capture antibody: 68667-1-PBS. Detection antibody: 68728-2-PBS. PBMC were cultured unstimulated or stimulated with 1 µg/mL PMA for 48 hours. 50 µL of the supernatant was analyzed using MP50049-1.