

For Research Use Only

AP1M1 Monoclonal antibody, PBS Only



Catalog Number: 68726-1-PBS

Basic Information

Catalog Number: 68726-1-PBS	GenBank Accession Number: BC017469	Purification Method: Protein A purification
Size: 1 mg/ml	GeneID (NCBI): 8907	CloneNo.: 1E9A11
Source: Mouse	UNIPROT ID: Q9BX55	
Isotype: IgG1	Full Name: adaptor-related protein complex 1, mu 1 subunit	
Immunogen Catalog Number: AG25303	Calculated MW: 423 aa, 49 kDa	
	Observed MW: 47-49 kDa	

Applications

Tested Applications:
WB, Indirect ELISA

Species Specificity:
Human, mouse

Background Information

AP1M1, also named as CLTNM, Mu-adaptin 1 and Clathrin coat assembly protein AP47, belongs to the adaptor complexes medium subunit family. It is a subunit of clathrin-associated adaptor protein complex 1 that plays a role in protein sorting in the trans-Golgi network (TGN) and endosomes. The AP complexes mediate the recruitment of clathrin to membranes and the recognition of sorting signals within the cytosolic tails of transmembrane cargo molecules.

Storage

Storage:
Store at -80°C.
The product is shipped with ice packs. Upon receipt, store it immediately at -80°C

Storage Buffer:
PBS Only

For technical support and original validation data for this product please contact:

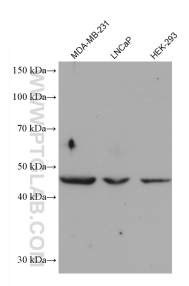
T: 4006900926

E: Proteintech-CN@ptglab.com

W: ptgcn.com

This product is exclusively available under Proteintech Group brand and is not available to purchase from any other manufacturer.

Selected Validation Data



Various lysates were subjected to SDS PAGE followed by western blot with 68726-1-Ig (AP1M1 antibody) at dilution of 1:10000 incubated at room temperature for 1.5 hours. This data was developed using the same antibody clone with 68726-1-PBS in a different storage buffer formulation.