

# AP1M1 Monoclonal antibody

Catalog Number: 68726-1-Ig

## Basic Information

Catalog Number:

68726-1-Ig

Size:

1000 ug/ml

Source:

Mouse

Isotype:

IgG1

Immunogen Catalog Number:

AG25303

GenBank Accession Number:

BC017469

GeneID (NCBI):

8907

UNIPROT ID:

Q9BX55

Full Name:

adaptor-related protein complex 1,  
mu 1 subunit

Calculated MW:

423 aa, 49 kDa

Observed MW:

47-49 kDa

Purification Method:

Protein A purification

CloneNo.:

1E9A11

Recommended Dilutions:

WB 1:5000-1:50000

IF/ICC 1:200-1:800

## Applications

Tested Applications:

WB, IF/ICC, ELISA

Species Specificity:

human, mouse

Positive Controls:

WB : MDA-MB-231 cells, A375 cells, NIH/3T3 cells,  
human placenta tissue, LNCaP cells, HEK-293 cells,  
Jurkat cells

IF/ICC : HeLa cells,

## Background Information

AP1M1, also named as CLTNM, Mu-adaptin 1 and Clathrin coat assembly protein AP47, belongs to the adaptor complexes medium subunit family. It is a subunit of clathrin-associated adaptor protein complex 1 that plays a role in protein sorting in the trans-Golgi network (TGN) and endosomes. The AP complexes mediate the recruitment of clathrin to membranes and the recognition of sorting signals within the cytosolic tails of transmembrane cargo molecules.

## Storage

Storage:

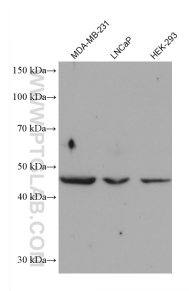
Store at -20°C. Stable for one year after shipment.

Storage Buffer:

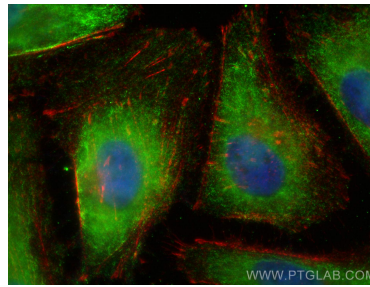
PBS with 0.02% sodium azide and 50% glycerol pH 7.3.

Aliquoting is unnecessary for -20°C storage

## Selected Validation Data



Various lysates were subjected to SDS PAGE followed by western blot with 68726-1-Ig (AP1M1 antibody) at dilution of 1:10000 incubated at room temperature for 1.5 hours.



Immunofluorescent analysis of (-20°C Ethanol) fixed HeLa cells using AP1M1 antibody (68726-1-Ig, Clone: 1E9A11 ) at dilution of 1:400 and Multi-rAb CoraLite® Plus 488-Goat Anti-Mouse Recombinant Secondary Antibody (H+L) (RGAM002).