

For Research Use Only

SPDEF Monoclonal antibody

Catalog Number: 68716-1-Ig



Basic Information

Catalog Number:

68716-1-Ig

Size:

1000 µg/ml

Source:

Mouse

Isotype:

IgG1

Immunogen Catalog Number:

AG33739

GenBank Accession Number:

BC021299

GeneID (NCBI):

25803

UNIPROT ID:

O95238

Full Name:

SAM pointed domain containing ets transcription factor

Calculated MW:

335 aa, 38 kDa

Observed MW:

38 kDa

Purification Method:

Protein G purification

CloneNo.:

2A1C1

Recommended Dilutions:

WB 1:1000-1:4000

Applications

Tested Applications:

WB, ELISA

Species Specificity:

Human

Positive Controls:

WB : EC109 cells, A549 cells, HeLa cells, MCF-7 cells, LNCaP cells, PC-3 cells, DU 145 cells

Background Information

Storage

Storage:

Store at -20°C. Stable for one year after shipment.

Storage Buffer:

PBS with 0.02% sodium azide and 50% glycerol pH 7.3.

Aliquoting is unnecessary for -20°C storage

For technical support and original validation data for this product please contact:

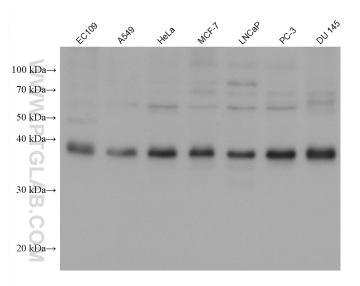
T: 4006900926

E: Proteintech-CN@ptglab.com

W: ptgcn.com

This product is exclusively available under Proteintech Group brand and is not available to purchase from any other manufacturer.

Selected Validation Data



Various lysates were subjected to SDS PAGE followed by western blot with 68716-1-Ig (SPDEF antibody) at dilution of 1:2000 incubated at room temperature for 1.5 hours.