

For Research Use Only

CEP135 Monoclonal antibody

Catalog Number: 68715-1-Ig



Basic Information

Catalog Number:

68715-1-Ig

Size:

1000 ug/ml

Source:

Mouse

Isotype:

IgG1

Immunogen Catalog Number:

AG19122

GenBank Accession Number:

BC136535

GeneID (NCBI):

9662

UNIPROT ID:

Q66GS9

Full Name:

centrosomal protein 135kDa

Calculated MW:

1140 aa, 134 kDa

Observed MW:

135 kDa

Purification Method:

Protein G purification

CloneNo.:

3C4B7

Recommended Dilutions:

WB 1:5000-1:50000

IF/ICC 1:200-1:800

Applications

Tested Applications:

WB, IF/ICC, ELISA

Species Specificity:

human

Positive Controls:

WB : A549 cells, LNCaP cells, HeLa cells, HEK-293 cells, Jurkat cells, K-562 cells, U2OS cells

IF/ICC : HeLa cells,

Background Information

CEP135 is a 135 kDa centrosomal protein that is present in a wide range of organisms. CEP135 is located at the centrosome throughout the cell cycle, and localization is independent of the microtubule network. It distributes throughout the centrosomal area in association with the electron-dense material surrounding centrioles.

Storage

Storage:

Store at -20°C. Stable for one year after shipment.

Storage Buffer:

PBS with 0.02% sodium azide and 50% glycerol pH 7.3.

Aliquoting is unnecessary for -20°C storage

For technical support and original validation data for this product please contact:

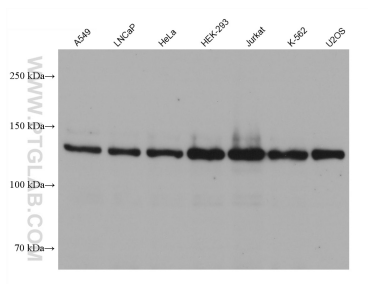
T: 4006900926

E: Proteintech-CN@ptglab.com

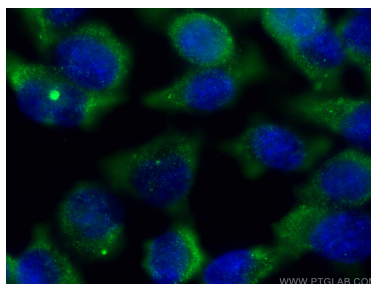
W: ptgcn.com

This product is exclusively available under Proteintech Group brand and is not available to purchase from any other manufacturer.

Selected Validation Data



Various lysates were subjected to SDS PAGE followed by western blot with 68715-1-Ig (CEP135 antibody) at dilution of 1:10000 incubated at room temperature for 1.5 hours.



Immunofluorescent analysis of (-20°C Ethanol) fixed HeLa cells using CEP135 antibody (68715-1-Ig, Clone: 3C4B7) at dilution of 1:400 and CoraLite®488-Conjugated AffiniPure Goat Anti-Mouse IgG(H+L) (SA00013-1).