

MTF2 Monoclonal antibody, PBS Only

Catalog Number: 68713-1-PBS

Basic Information

Catalog Number:

68713-1-PBS

Size:

1 mg/ml

Source:

Mouse

Isotype:

IgG2b

Immunogen Catalog Number:

AG9384

GenBank Accession Number:

BC010013

GeneID (NCBI):

22823

UNIPROT ID:

Q9Y483

Full Name:

metal response element binding
transcription factor 2

Calculated MW:

536 aa, 61 kDa

Observed MW:

55 kDa, 60 kDa, 75 kDa

Purification Method:

Protein A purification

CloneNo.:

2E5D5

Applications

Tested Applications:

WB, Indirect ELISA

Species Specificity:

Human, Rat, Rabbit, Mouse

Background Information

MTF2, also named as Metal-response element-binding transcription factor 2, is a 593 amino acid protein. It exists several isoforms and the range of the molecular weight of isoforms are about 55-60 kDa and 29 kDa. MTF2 contains 2 PHD-type zinc fingers and belongs to the Polycomb-like family. MTF2 acts by binding to H3K36me3, a mark for transcriptional activation, and recruiting the PRC2 complex, leading to enhance PRC2 H3K27me3 methylation activity and regulates the transcriptional networks during embryonic stem cell self-renewal and differentiation.

Storage

Storage:

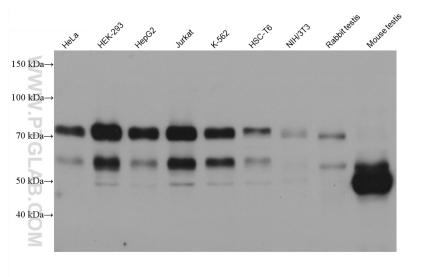
Store at -80°C.

The product is shipped with ice packs. Upon receipt, store it immediately at -80°C

Storage Buffer:

PBS Only

Selected Validation Data



Various lysates were subjected to SDS PAGE followed by western blot with 68713-1-Ig (MTF2 antibody) at dilution of 1:10000 incubated at room temperature for 1.5 hours. This data was developed using the same antibody clone with 68713-1-PBS in a different storage buffer formulation.