

TPX2 Monoclonal antibody, PBS Only

Catalog Number: 68712-1-PBS

Basic Information

Catalog Number:

68712-1-PBS

Size:

1 mg/ml

Source:

Mouse

Isotype:

IgG2b

Immunogen Catalog Number:

AG33683

GenBank Accession Number:

BC020207

GeneID (NCBI):

22974

UNIPROT ID:

Q9ULW0

Full Name:

TPX2, microtubule-associated,
homolog (Xenopus laevis)

Calculated MW:

747 aa, 86 kDa

Observed MW:

98 kDa

Purification Method:

Protein A purification

CloneNo.:

2E10C1

Applications

Tested Applications:

WB, Indirect ELISA

Species Specificity:

Human, mouse, rat

Background Information

TPX2, also known as DIL2, p10, is a microtubule organization- and cell cycle-associated protein. In the early stage of mitosis, TPX2 is released in a RanGTP-dependent manner and plays a significant role in mitotic spindle formation and subsequent proper segregation of chromosomes during cell division. Furthermore, during interphase, TPX2 is involved in DNA damage response by regulation of γ -H2AX signals (PMID: 25914189). Aberrant expression of TPX2 leads to improper spindle assembly and chromosomal instability. Overexpressed in cancers, TPX2 is being established as the marker for the diagnosis and prognosis of malignancies (PMID: 24556998).

Storage

Storage:

Store at -80°C.

The product is shipped with ice packs. Upon receipt, store it immediately at -80°C

Storage Buffer:

PBS Only

For technical support and original validation data for this product please contact:

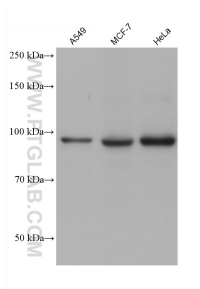
T: 4006900926

E: Proteintech-CN@ptglab.com

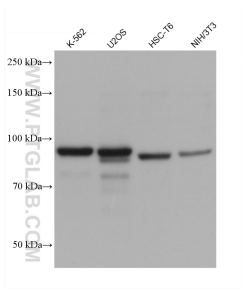
W: ptgcn.com

This product is exclusively available under Proteintech Group brand and is not available to purchase from any other manufacturer.

Selected Validation Data



Various lysates were subjected to SDS PAGE followed by western blot with 68712-1-Ig (TPX2 antibody) at dilution of 1:20000 incubated at room temperature for 1.5 hours. This data was developed using the same antibody clone with 68712-1-PBS in a different storage buffer formulation.



Various lysates were subjected to SDS PAGE followed by western blot with 68712-1-Ig (TPX2 antibody) at dilution of 1:20000 incubated at room temperature for 1.5 hours. This data was developed using the same antibody clone with 68712-1-PBS in a different storage buffer formulation.