

For Research Use Only

MMP1 Monoclonal antibody, PBS Only (Capture)

Catalog Number: 68705-1-PBS



Basic Information

Catalog Number:

68705-1-PBS

Concentration:

1000 µg/ml

Source:

Mouse

Isotype:

IgG1

Immunogen Catalog Number:

AG0547

GenBank Accession Number:

BC013875

GeneID (NCBI):

4312

UNIPROT ID:

P03956

Full Name:

matrix metalloproteinase 1
(interstitial collagenase)

Calculated MW:

54 kDa

Purification Method:

Protein G Magarose purification

CloneNo.:

1E11C5

Applications

Tested Applications:

Sandwich ELISA, Indirect ELISA, Sample test

Species Specificity:

human

Background Information

Storage

Storage:

Store at -80°C.

The product is shipped with ice packs. Upon receipt, store it immediately at -80°C

Storage Buffer:

PBS only, pH7.3

For technical support and original validation data for this product please contact:

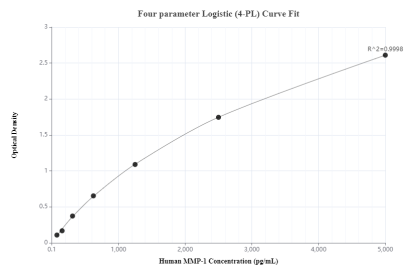
T: 4006900926

E: Proteintech-CN@ptglab.com

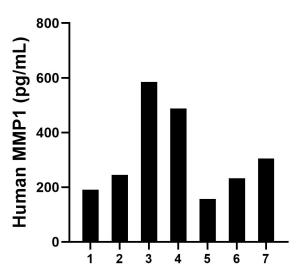
W: ptgcn.com

This product is exclusively available under Proteintech Group brand and is not available to purchase from any other manufacturer.

Selected Validation Data



Sandwich ELISA standard curve of MP50047-1, MMP1 Monoclonal Matched Antibody Pair, PBS Only. Capture antibody: 68705-1-PBS. Detection antibody: 68706-1-PBS. Standard: Eg0527. Range: 78.1-5000 pg/mL.



Serum of seven individual healthy human donors was measured. The MMP1 concentration of detected samples was determined to be 314.7 pg/mL with a range of 157.5-584.8 pg/mL.