

For Research Use Only

CD200 Monoclonal antibody, PBS Only (Detector)

Catalog Number: 68700-2-PBS



Basic Information

Catalog Number: 68700-2-PBS	GenBank Accession Number: BC022522	Purification Method: Protein A purification
Concentration: 1mg/ml	GeneID (NCBI): 4345	CloneNo.: 1A1B5
Source: Mouse	UNIPROT ID: P41217	Affinity: $K_D = 5.90 \times 10^{-8}$
Isotype: IgG2b	Full Name: CD200 molecule	$K_{off} = 5.13 \times 10^{-3}$
Immunogen Catalog Number: EG0006	Calculated MW: 269 aa, 30 kDa	$K_{on} = 8.70 \times 10^4$

Applications

Tested Applications:
Sandwich ELISA, Indirect ELISA, Sample test

Species Specificity:
human

Background Information

Storage

Storage:
Store at -80°C.
The product is shipped with ice packs. Upon receipt, store it immediately at -80°C

Storage Buffer:
PBS only, pH7.3

For technical support and original validation data for this product please contact:

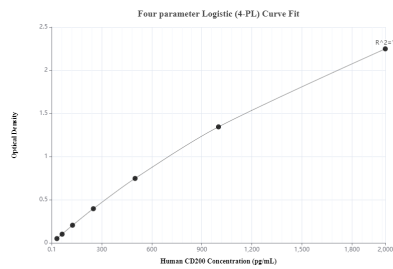
T: 4006900926

E: Proteintech-CN@ptglab.com

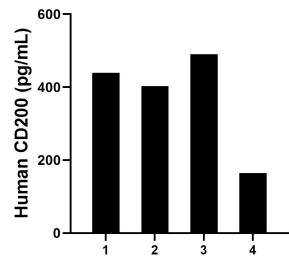
W: ptgcn.com

This product is exclusively available under Proteintech Group brand and is not available to purchase from any other manufacturer.

Selected Validation Data



Sandwich ELISA standard curve of MP50062-1, CD200 Monoclonal Matched Antibody Pair - PBS only. 68700-1-PBS was coated to a plate as the capture antibody and incubated with serial dilutions of standard Eg0006. 68700-2-PBS was HRP conjugated as the detection antibody. Range: 31.3-2000 pg/mL.



Serum of four individual healthy human donors was measured. The human CD200 concentration of detected samples was determined to be 374.2 pg/mL with a range of 164.2 - 490.7 pg/mL.