

For Research Use Only

# APOE Monoclonal antibody, PBS Only (Detector)

Catalog Number: 68696-2-PBS



## Basic Information

Catalog Number:

68696-2-PBS

Concentration:

1000  $\mu$ g/ml

Source:

Mouse

Isotype:

IgG2a

Immunogen Catalog Number:

EG0448

GenBank Accession Number:

BC003557

GeneID (NCBI):

348

UNIPROT ID:

P02649

Full Name:

Apolipoprotein E

Calculated MW:

36 kDa

Purification Method:

Protein A purification

CloneNo.:

1D1C3

## Applications

Tested Applications:

Sandwich ELISA, Indirect ELISA, Sample test

Species Specificity:

human

## Background Information

### Storage

Storage:

Store at -80°C.

The product is shipped with ice packs. Upon receipt, store it immediately at -80°C

Storage Buffer:

PBS only, pH7.3

For technical support and original validation data for this product please contact:

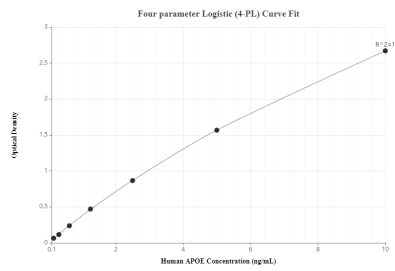
T: 4006900926

E: [Proteintech-CN@ptglab.com](mailto:Proteintech-CN@ptglab.com)

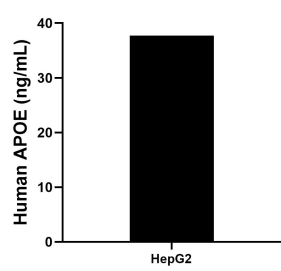
W: [ptgcn.com](http://ptgcn.com)

This product is exclusively available under Proteintech Group brand and is not available to purchase from any other manufacturer.

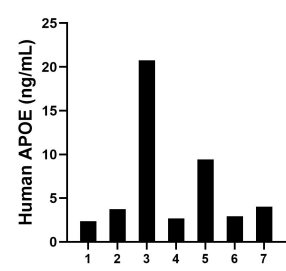
# Selected Validation Data



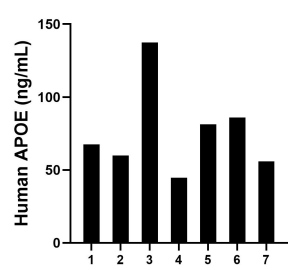
Sandwich ELISA standard curve of MP50078-1, APOE Monoclonal Matched Antibody Pair, PBS Only. Capture antibody: 68696-1-PBS. Detection antibody: 68696-2-PBS. Standard: Eg0448. Range: 0.156-10 ng/mL



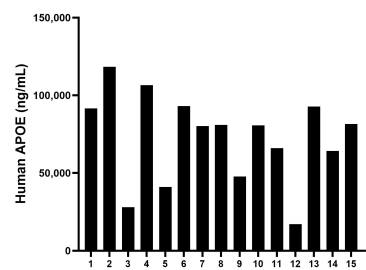
HepG2 cells were cultured in DMEM supplemented with 10% fetal bovine serum, 2 mM L-glutamine, 100 U/mL penicillin, and 100 μg/mL streptomycin sulfate. An aliquot of the cell culture supernate was removed, assayed for human APOE, and measured 37.72 ng/mL



Urine of seven individual healthy human donors was measured. The APOE concentration of detected samples was determined to be 6.56 ng/mL with a range of 2.35-20.75 ng/mL



Human milk of seven individual healthy human donors was measured. The APOE concentration of detected samples was determined to be 76.11 ng/mL with a range of 44.74-137.34 ng/mL



Serum of sixteen individual healthy human donors was measured. The APOE concentration of detected samples was determined to be 72,675.66 ng/mL with a range of 17,060.26-118,380.99 ng/mL