

For Research Use Only

VEGFR2/KDR Monoclonal antibody, PBS Only (Capture)

Catalog Number: 68689-1-PBS



Basic Information

Catalog Number: 68689-1-PBS	GenBank Accession Number: NM_002253	Purification Method: Protein A purification
Concentration: 1mg/ml	GeneID (NCBI): 3791	CloneNo.: 3A3F5
Source: Mouse	UNIPROT ID: P35968-1	Affinity: $K_D = 6.32 \times 10^{-12}$
Isotype: IgG1	Full Name: kinase insert domain receptor (a type III receptor tyrosine kinase)	$K_{off} = 3.94 \times 10^{-6}$ $K_{on} = 6.24 \times 10^5$
Immunogen Catalog Number: EG0218	Calculated MW: 152 kDa	

Applications

Tested Applications:
Sandwich ELISA, Indirect ELISA, Sample test

Species Specificity:
human

Background Information

Storage

Storage:
Store at -80°C.
The product is shipped with ice packs. Upon receipt, store it immediately at -80°C

Storage Buffer:
PBS only, pH7.3

For technical support and original validation data for this product please contact:

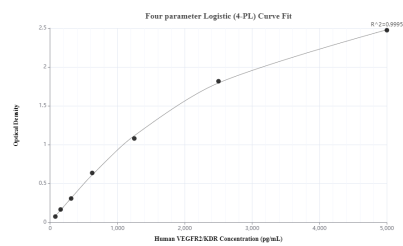
T: 4006900926

E: Proteintech-CN@ptglab.com

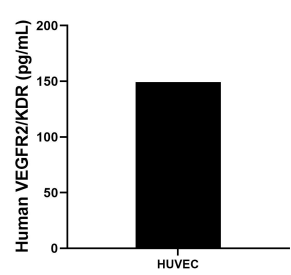
W: ptgcn.com

This product is exclusively available under Proteintech Group brand and is not available to purchase from any other manufacturer.

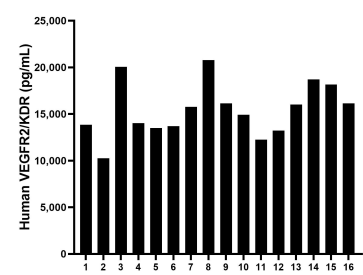
Selected Validation Data



Sandwich ELISA standard curve of MP50080-1, KDR Monoclonal Matched Antibody Pair - PBS only. 68689-1-PBS was coated to a plate as the capture antibody and incubated with serial dilutions of standard Eg0218. 68689-2-PBS was HRP conjugated as the detection antibody. Range: 78.1-5000 pg/mL



HUVEC human umbilical vein endothelial cells were cultured in EGM-2. Aliquots of the cell culture supernatants were removed, assayed for levels of VEGFR2/KDR and measured 149.4 pg/mL



Serum of sixteen individual healthy human donors was measured. The human VEGFR2/KDR concentration of detected samples was determined to be 15,470.3 pg/mL with a range of 10,253.3 - 20,780.0 pg/mL