

For Research Use Only

# CD4 Monoclonal antibody, PBS Only (Detector)

Catalog Number: 68688-1-PBS



## Basic Information

Catalog Number: 68688-1-PBS	GenBank Accession Number: BC025782	Purification Method: Protein G purification
Concentration: 1mg/ml	GeneID (NCBI): 920	CloneNo.: 1E11B4
Source: Mouse	ENSEMBL Gene ID: ENSG00000010610	Affinity: $K_D = 1.39 \times 10^{-10}$
Isotype: IgG1	UNIPROT ID: P01730	$K_{off} = 4.36 \times 10^{-6}$
Immunogen Catalog Number: EG0333	Full Name: CD4 molecule	$K_{on} = 3.13 \times 10^4$
	Calculated MW: 55 kDa	

## Applications

Tested Applications:  
Sandwich ELISA, Indirect ELISA, Sample test

Species Specificity:  
human

## Background Information

### Storage

Storage:  
Store at -80°C.  
The product is shipped with ice packs. Upon receipt, store it immediately at -80°C

Storage Buffer:  
PBS only, pH7.3

For technical support and original validation data for this product please contact:

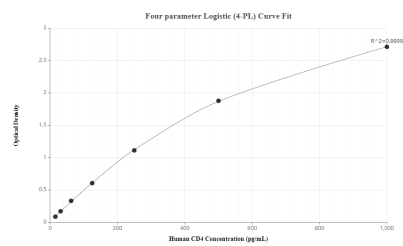
T: 4006900926

E: [Proteintech-CN@ptglab.com](mailto:Proteintech-CN@ptglab.com)

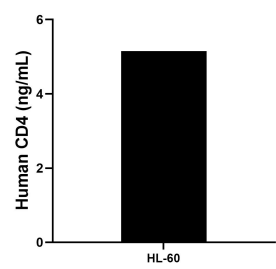
W: [ptgcn.com](http://ptgcn.com)

This product is exclusively available under Proteintech Group brand and is not available to purchase from any other manufacturer.

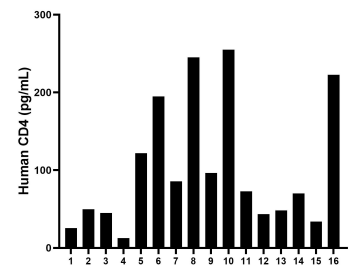
## Selected Validation Data



Sandwich ELISA standard curve of MP50077-1, CD4 Monoclonal Matched Antibody Pair - PBS only. 65147-1-PBS was coated to a plate as the capture antibody and incubated with serial dilutions of standard Eg0333. 68688-1-PBS was HRP conjugated as the detection antibody. Range: 15.6-1000 pg/mL



The mean CD4 concentration was determined to be 5.16 ng/mL in HL-60 cell extract based on a 4.3 mg/mL extract load.



Serum of sixteen individual healthy human donors was measured. The human CD4 concentration of detected samples was determined to be 101.4 pg/mL with a range of 12.7 - 255.0 pg/mL