

For Research Use Only

# HP Monoclonal antibody, PBS Only (Capture)

Catalog Number: 68682-1-PBS



## Basic Information

Catalog Number:

68682-1-PBS

Concentration:

1000  $\mu$ g/ml

Source:

Mouse

Isotype:

IgG1

Immunogen Catalog Number:

EG0445

GenBank Accession Number:

BC121125

GeneID (NCBI):

3240

UNIPROT ID:

P00738

Full Name:

haptoglobin

Purification Method:

Protein G purification

CloneNo.:

1E1F4

## Applications

Tested Applications:

Sandwich ELISA, Indirect ELISA, Sample test

Species Specificity:

human

## Background Information

### Storage

Storage:

Store at -80°C.

The product is shipped with ice packs. Upon receipt, store it immediately at -80°C

Storage Buffer:

PBS only, pH7.3

For technical support and original validation data for this product please contact:

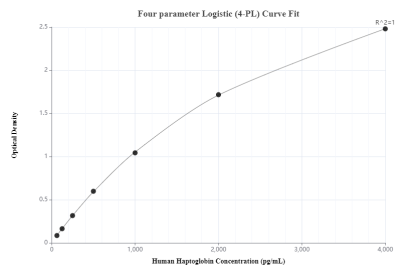
T: 4006900926

E: [Proteintech-CN@ptglab.com](mailto:Proteintech-CN@ptglab.com)

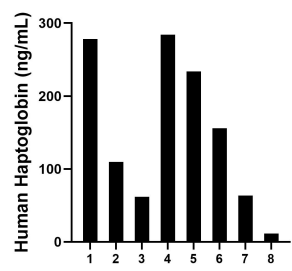
W: [ptgcn.com](http://ptgcn.com)

This product is exclusively available under Proteintech Group brand and is not available to purchase from any other manufacturer.

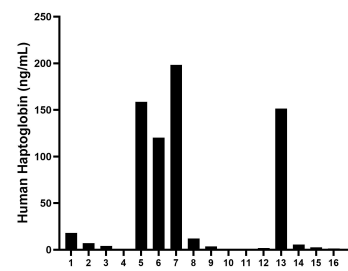
## Selected Validation Data



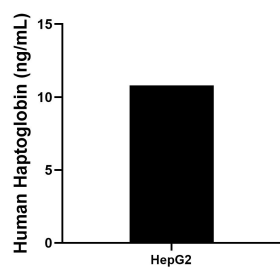
Sandwich ELISA standard curve of MP50036-1, Haptoglobin Monoclonal Matched Antibody Pair, PBS Only. Capture antibody: 68682-1-PBS. Detection antibody: 68682-2-PBS. Standard: Eg0445. Range: 62.5-4000 pg/mL.



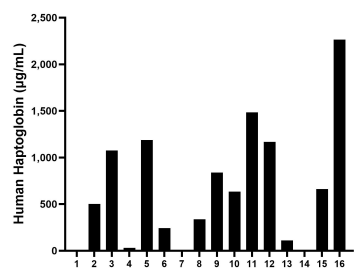
Saliva of eight individual healthy human donors was measured. The Haptoglobin concentration of detected samples was determined to be 149.8 ng/mL with a range of 11.6-284.1 ng/mL.



Urine of sixteen individual healthy human donors was measured. The Haptoglobin concentration of detected samples was determined to be 42.8 ng/mL with a range of 0.2-198.3 ng/mL.



HepG2 cells were cultured in serum-free DMEM supplemented with 2.5 mM L-glutamine, 100 U/mL penicillin, and 100  $\mu$ g/mL streptomycin sulfate. An aliquot of the cell culture supernate was removed at 3 days, assayed for human Haptoglobin, and measured 10.8 ng/mL.



Serum of sixteen individual healthy human donors was measured. The Haptoglobin concentration of detected samples was determined to be 658.6  $\mu$ g/mL with a range of 0.6-2,265.0  $\mu$ g/mL.