

For Research Use Only

# VISTA Monoclonal antibody, PBS Only (Detector)

Catalog Number: 68676-2-PBS



## Basic Information

Catalog Number: 68676-2-PBS	GenBank Accession Number: BC020568	Purification Method: Protein A purification
Concentration: 1mg/ml	GeneID (NCBI): 64115	CloneNo.: 1D5C3
Source: Mouse	UNIPROT ID: Q9H7M9	Affinity: $K_D = 6.58 \times 10^{-11}$
Isotype: IgG1	Full Name: chromosome 10 open reading frame 54	$K_{off} = 3.67 \times 10^{-6}$ $K_{on} = 5.58 \times 10^4$
Immunogen Catalog Number: EG0017	Calculated MW: 311 aa, 34 kDa	

## Applications

Tested Applications:  
Sandwich ELISA, Indirect ELISA, Sample test

Species Specificity:  
human

## Background Information

### Storage

Storage:  
Store at -80°C.  
The product is shipped with ice packs. Upon receipt, store it immediately at -80°C

Storage Buffer:  
PBS only, pH7.3

For technical support and original validation data for this product please contact:

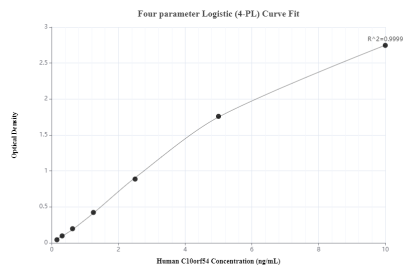
T: 4006900926

E: [Proteintech-CN@ptglab.com](mailto:Proteintech-CN@ptglab.com)

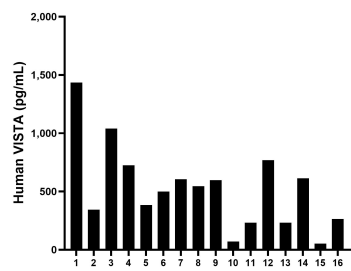
W: [ptgcn.com](http://ptgcn.com)

This product is exclusively available under Proteintech Group brand and is not available to purchase from any other manufacturer.

## Selected Validation Data



Sandwich ELISA standard curve of MP50058-1, VISTA Monoclonal Matched Antibody Pair - PBS only. 68676-1-PBS was coated to a plate as the capture antibody and incubated with serial dilutions of standard Eg0017. 68676-2-PBS was HRP conjugated as the detection antibody. Range: 0.156-10 ng/mL



Serum of sixteen individual healthy human donors was measured. The VISTA concentration of detected samples was determined to be 525.25 pg/mL with a range of 52.46-1,435.23 pg/mL