

For Research Use Only

# CEA/CD66e Monoclonal antibody, PBS Only (Detector)

Catalog Number: 68675-2-PBS



## Basic Information

Catalog Number: 68675-2-PBS	GenBank Accession Number: BC034671	Purification Method: Protein G purification
Concentration: 1000 µg/ml	GeneID (NCBI): 1048	CloneNo.: 1E10A7
Source: Mouse	UNIPROT ID: P06731	
Isotype: IgG1	Full Name: carcinoembryonic antigen-related cell adhesion molecule 5	
Immunogen Catalog Number: EG0247	Calculated MW: 77 kDa	

## Applications

Tested Applications:  
Sandwich ELISA, Indirect ELISA, Sample test

Species Specificity:  
human

## Background Information

### Storage

Storage:  
Store at -80°C.  
**The product is shipped with ice packs. Upon receipt, store it immediately at -80°C**

Storage Buffer:  
PBS only, pH7.3

For technical support and original validation data for this product please contact:

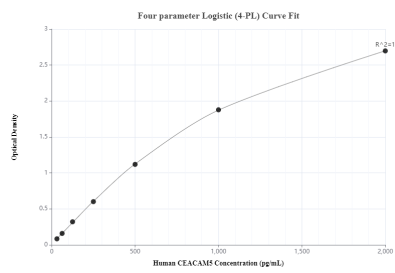
T: 4006900926

E: [Proteintech-CN@ptglab.com](mailto:Proteintech-CN@ptglab.com)

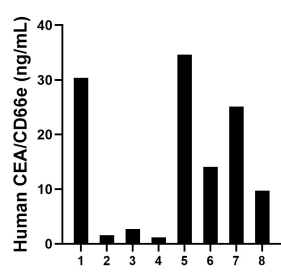
W: [ptgcn.com](http://ptgcn.com)

**This product is exclusively available under Proteintech Group brand and is not available to purchase from any other manufacturer.**

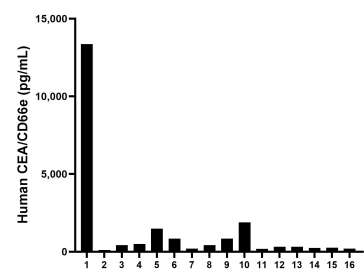
## Selected Validation Data



Sandwich ELISA standard curve of MP50057-1, CEA/CEACAM5 Monoclonal Matched Antibody Pair, PBS Only. Capture antibody: 68675-1-PBS. Detection antibody: 68675-2-PBS. Standard: Eg0247. Range: 31.25-2000 pg/mL



Saliva of eight individual healthy human donors was measured. The CEA/CD66e concentration of detected samples was determined to be 14.9 ng/mL with a range of 1.2-34.6 ng/mL



Serum of sixteen individual healthy human donors was measured. The CEA/CD66e concentration of detected samples was determined to be 1,351.2 pg/mL with a range of 109.3-13,359.6 pg/mL