

For Research Use Only

# CD86 Monoclonal antibody, PBS Only (Detector)

Catalog Number: 68674-2-PBS



## Basic Information

Catalog Number:	68674-2-PBS	GenBank Accession Number:	NM_175862	Purification Method:	Protein G purification
Concentration:	1mg/ml	GeneID (NCBI):	942	CloneNo.:	1D6H7
Source:	Mouse	ENSEMBL Gene ID:	ENSG00000114013		
Isotype:	IgG1	UNIPROT ID:	P42081		
Immunogen Catalog Number:	EG0059	Full Name:	CD86 molecule		
		Calculated MW:	329 aa, 38 kDa		

## Applications

**Tested Applications:**  
WB, Sandwich ELISA, Indirect ELISA, Sample test

**Species Specificity:**  
human

## Background Information

### Storage

**Storage:**  
Store at -80°C.  
**The product is shipped with ice packs. Upon receipt, store it immediately at -80°C**

**Storage Buffer:**  
PBS only, pH7.3

For technical support and original validation data for this product please contact:

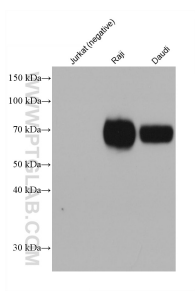
T: 4006900926

E: [Proteintech-CN@ptglab.com](mailto:Proteintech-CN@ptglab.com)

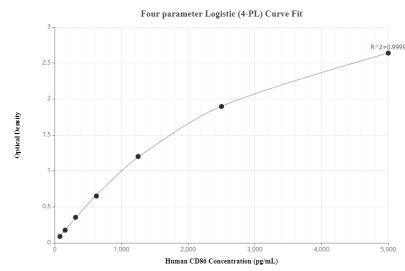
W: [ptgcn.com](http://ptgcn.com)

**This product is exclusively available under Proteintech Group brand and is not available to purchase from any other manufacturer.**

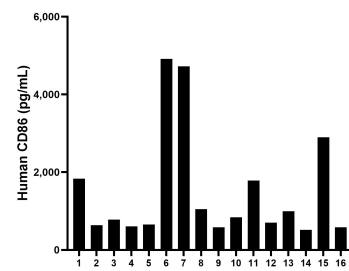
Selected Validation Data



Various lysates were subjected to SDS PAGE followed by western blot with 68674-2-Ig (CD86 antibody) at dilution of 1:10000 incubated at room temperature for 1.5 hours. This data was developed using the same antibody clone with 68674-2-PBS in a different storage buffer formulation.



Sandwich ELISA standard curve of MP50056-1, CD86 Monoclonal Matched Antibody Pair, PBS Only. Capture antibody: 68674-1-PBS. Detection antibody: 68674-2-PBS. Standard: Eg0059. Range: 78.1-5000 pg/mL.



Serum of sixteen individual healthy human donors was measured. The human CD86 concentration of detected samples was determined to be 1,506.0 pg/mL with a range of 516.7 - 4,914.5 pg/mL.