

For Research Use Only

# IFN alpha 2A Monoclonal antibody, PBS Only (Detector)

Catalog Number: 68665-1-PBS



## Basic Information

Catalog Number:

68665-1-PBS

Concentration:

1mg/ml

Source:

Mouse

Isotype:

IgG1

Immunogen Catalog Number:

HZ-1066

GenBank Accession Number:

GeneID (NCBI):

3440

Full Name:

interferon, alpha 2

Purification Method:

Protein G purification

CloneNo.:

3C7G3

## Applications

Tested Applications:

Sandwich ELISA, Indirect ELISA, Sample test

Species Specificity:

human

## Background Information

### Storage

Storage:

Store at -80°C.

The product is shipped with ice packs. Upon receipt, store it immediately at -80°C

Storage Buffer:

PBS only, pH7.3

For technical support and original validation data for this product please contact:

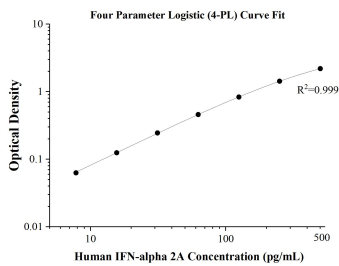
T: 4006900926

E: [Proteintech-CN@ptglab.com](mailto:Proteintech-CN@ptglab.com)

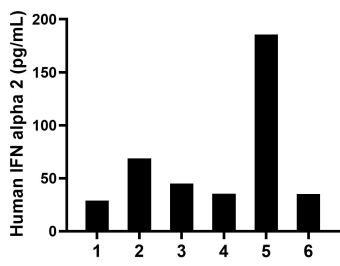
W: [ptgcn.com](http://ptgcn.com)

This product is exclusively available under Proteintech Group brand and is not available to purchase from any other manufacturer.

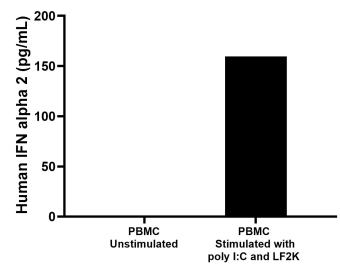
Selected Validation Data



Sandwich ELISA standard curve of MP50005-1, IFNA2 Monoclonal Matched Antibody Pair, PBS Only. Capture antibody: 69008-1-PBS. Detection antibody: 68665-1-PBS. Standard: HZ-1066. Range: 7.8-500 pg/mL.



Serum of six individual healthy human donors was measured. The IFN alpha 2 concentration of detected samples was determined to be 66.5 pg/mL with a range of 29.0-185.5 pg/mL.



Human peripheral blood mononuclear cells (PBMC) was cultured in RPMI 1640 supplemented with 10% fetal bovine serum, 50  $\mu$  M  $\beta$ -mercaptoethanol, 2 mM L-glutamine, and 100  $\mu$  g/mL of streptomycin sulfate. The cells were unstimulated or stimulated with 10  $\mu$  g/mL poly I:C and Lipofectamine 2000 (LF2K) for 1 day. An aliquot of the cell culture supernatant was removed, the mean IFN alpha 2 concentration was undetectable in unstimulated PBMC