

For Research Use Only

M-CSF Monoclonal antibody, PBS Only (Detector)

Catalog Number: 68662-1-PBS



Basic Information

Catalog Number:

68662-1-PBS

Concentration:

1000 μ g/ml

Source:

Mouse

Isotype:

IgG1

Immunogen Catalog Number:

HZ-1192

GenBank Accession Number:

GeneID (NCBI):

1435

Full Name:

colony stimulating factor 1
(macrophage)

Purification Method:

Protein G purification

CloneNo.:

2C3B4

Affinity:

$K_D = 9.64 \times 10^{-10}$

$K_{off} = 8.75 \times 10^{-5}$

$K_{on} = 9.08 \times 10^4$

Applications

Tested Applications:

Sandwich ELISA, Indirect ELISA, Sample test

Species Specificity:

human

Background Information

Storage

Storage:

Store at -80°C.

The product is shipped with ice packs. Upon receipt, store it immediately at -80°C

Storage Buffer:

PBS only, pH7.3

For technical support and original validation data for this product please contact:

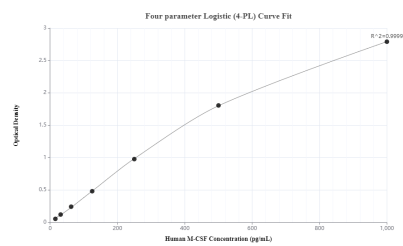
T: 4006900926

E: Proteintech-CN@ptglab.com

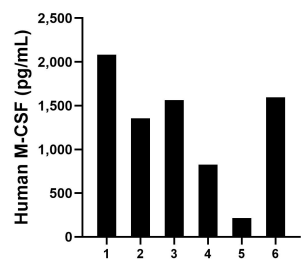
W: ptgcn.com

This product is exclusively available under Proteintech Group brand and is not available to purchase from any other manufacturer.

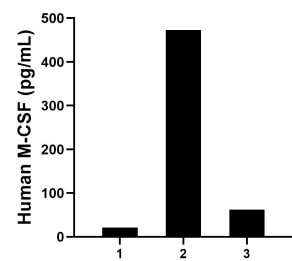
Selected Validation Data



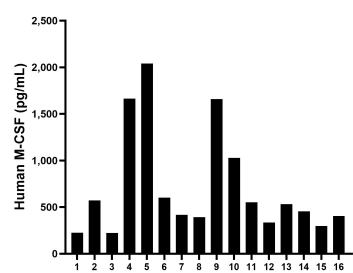
Sandwich ELISA standard curve of MP50033-1, MCSF Monoclonal Matched Antibody Pair - PBS Only. 69033-1-PBS was coated to a plate as the capture antibody and incubated with serial dilutions of standard HZ-1192. 68662-1-PBS was HRP conjugated as the detection antibody. Range: 15.6-1000 pg/mL.



Urine of six individual healthy human donors was measured. The M-CSF concentration of detected samples was determined to be 1,272.6 pg/mL with a range of 216.3-2,082.1 pg/mL.



Saliva of three individual healthy human donors was measured. The M-CSF concentration of detected samples was determined to be 185.5 pg/mL with a range of 21.3-473.0 pg/mL.



Serum of sixteen individual healthy human donors was measured. The M-CSF concentration of detected samples was determined to be 712.6 pg/mL with a range of 223.9-2,041.6 pg/mL.