

For Research Use Only

# beta NGF Monoclonal antibody, PBS Only (Capture)

Catalog Number: 68661-1-PBS



## Basic Information

Catalog Number:

68661-1-PBS

Concentration:

1000  $\mu$ g/ml

Source:

Mouse

Isotype:

IgG1

Immunogen Catalog Number:

HZ-1222

GenBank Accession Number:

GeneID (NCBI):

4803

Full Name:

nerve growth factor (beta polypeptide)

Purification Method:

Protein A purification

CloneNo.:

5F2E4

Affinity:

$K_D = 2.69 \times 10^{-8}$

$K_{off} = 2.17 \times 10^{-4}$

$K_{on} = 8.06 \times 10^3$

## Applications

Tested Applications:

Sandwich ELISA, Indirect ELISA, Sample test

Species Specificity:

human

## Background Information

### Storage

Storage:

Store at  $-80^{\circ}\text{C}$ .

The product is shipped with ice packs. Upon receipt, store it immediately at  $-80^{\circ}\text{C}$

Storage Buffer:

PBS only, pH7.3

For technical support and original validation data for this product please contact:

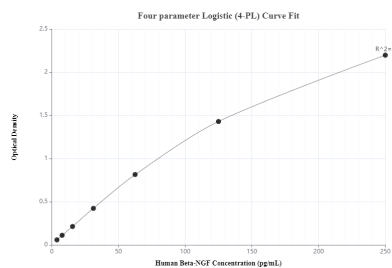
T: 4006900926

E: [Proteintech-CN@ptglab.com](mailto:Proteintech-CN@ptglab.com)

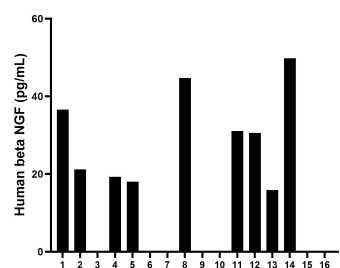
W: [ptgcn.com](http://ptgcn.com)

This product is exclusively available under Proteintech Group brand and is not available to purchase from any other manufacturer.

## Selected Validation Data



Sandwich ELISA standard curve of MP50038-1, NGF Monoclonal Matched Antibody Pair - PBS only. 68661-1-PBS was coated to a plate as the capture antibody and incubated with serial dilutions of standard HZ-1222. 68661-2-PBS was biotinylated as the detection antibody. Range: 3.9-250 pg/mL.



Serum of sixteen individual healthy human donors was measured. The beta NGF concentration of detected samples was determined to be 16.7 pg/mL with a range of ND-49.8 pg/mL.