

For Research Use Only

# IL-6 Monoclonal antibody, PBS Only (Detector)

Catalog Number: 68659-2-PBS



## Basic Information

Catalog Number:

68659-2-PBS

Concentration:

1000 µg/ml

Source:

Mouse

Isotype:

IgG1

Immunogen Catalog Number:

HZ-1019

GenBank Accession Number:

GeneID (NCBI):

3569

ENSEMBL Gene ID:

ENSG00000136244

Full Name:

interleukin 6 (interferon, beta 2)

Purification Method:

Protein G purification

CloneNo.:

6C4B7

## Applications

Tested Applications:

Cytometric bead array, Sandwich ELISA, Indirect ELISA, Sample test

Species Specificity:

human

## Background Information

### Storage

Storage:

Store at -80°C.

The product is shipped with ice packs. Upon receipt, store it immediately at -80°C

Storage Buffer:

PBS only, pH7.3

For technical support and original validation data for this product please contact:

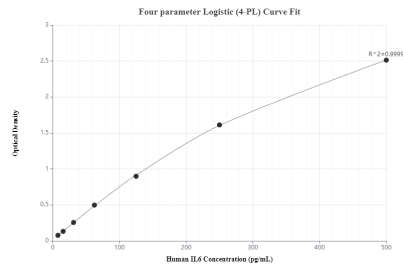
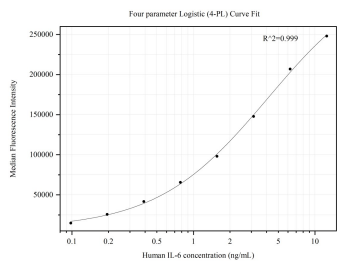
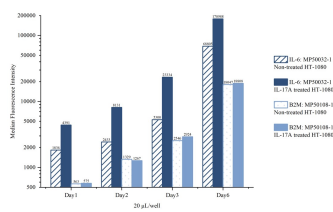
T: 4006900926

E: [Proteintech-CN@ptglab.com](mailto:Proteintech-CN@ptglab.com)

W: [ptgcn.com](http://ptgcn.com)

This product is exclusively available under Proteintech Group brand and is not available to purchase from any other manufacturer.

Selected Validation Data

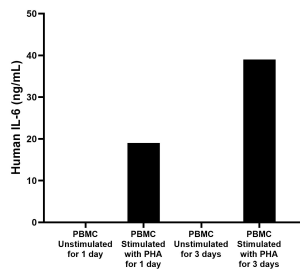
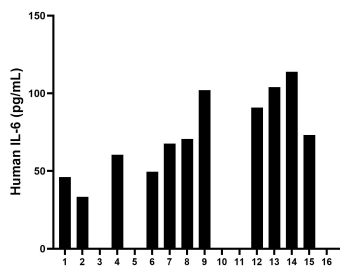


Cytometric bead array of HT-1080 cells supernatant using MP50032-1, IL-6 Monoclonal Matched Antibody Pair, PBS Only. Capture antibody: 68659-1-PBS. Detection antibody: 68659-2-PBS. HT-1080 cells were inoculated into 6 well plate at 40000 cells/well followed by culture for 6 days in normal culture media or IL-17A (Cat.NO. HZ-1113, 40 ng/mL) containing media. 20  $\mu$  L of the supernatant from day 1, 2, 3 and day 6 was analyzed using MP50032-1 (IL-6 Monoclonal



Cytometric bead array standard curve of MP50032-1, IL-6 Monoclonal Matched Antibody Pair, PBS Only. Capture antibody: 68659-1-PBS. Detection antibody: 68659-2-PBS. Standard: HZ-1019. Range: 0.098-12.5 ng/mL.

Sandwich ELISA standard curve of MP50032-1, IL6 Monoclonal Matched Antibody Pair, PBS Only. Capture antibody: 68659-1-PBS. Detection antibody: 68659-2-PBS. Standard: HZ-1019. Range: 7.8-500 pg/mL.



Serum of sixteen individual healthy human donors was measured. The IL-6 concentration of detected samples was determined to be 73.8 pg/mL with a range of ND-113.9 pg/mL.

Human peripheral blood mononuclear cells (PBMC) were cultured unstimulated or stimulated with 10  $\mu$  g/mL PHA for 1 day or 3 days. For the PBMC supernatant cultured for 1 day, the mean IL-6 concentration was determined to be 0.1 ng/mL in unstimulated PBMC supernatant, 19.0 ng/mL in PHA stimulated PBMC supernatant. For the PBMC supernatant cultured for 3 days, the mean IL-6 concentration was determined to be 0.1 ng/mL in unstimulated PBMC supernatant, 39.0

