

For Research Use Only

CARD9 Monoclonal antibody

Catalog Number: 68657-1-Ig **Featured Product**



Basic Information

Catalog Number:

68657-1-Ig

Size:

1000 ug/ml

Source:

Mouse

Isotype:

IgG1

Immunogen Catalog Number:

AG33643

GenBank Accession Number:

BC008877

GeneID (NCBI):

64170

UNIPROT ID:

Q9H257

Full Name:

caspase recruitment domain family,
member 9

Calculated MW:

62 kDa

Observed MW:

55-65 kDa

Purification Method:

Protein G purification

CloneNo.:

2F3E10

Recommended Dilutions:

WB 1:5000-1:50000

IF/ICC 1:200-1:800

Applications

Tested Applications:

WB, IF/ICC, ELISA

Species Specificity:

human

Positive Controls:

WB : NK-92 cells, HL-60 cells, TF-1 cells, THP-1 cells, U-937 cells, MOLT-4 cells

IF/ICC : HeLa cells,

Background Information

CARD9, a member of the caspase recruitment domain (CARD) protein family, plays an important regulatory role in cell apoptosis. Defects in CARD9 are the cause of familial candidiasis type 2 (CANDF2) characterized by impaired clearance of fungal infections and results in colonization and infections of the mucosa or skin, predominantly with *Candida albicans*. CARD9 is highly expressed in the spleen and regulates activation of NF-kappa-B by interaction with positive regulator of apoptosis BCL10 via the CARD domain.

Storage

Storage:

Store at -20°C. Stable for one year after shipment.

Storage Buffer:

PBS with 0.02% sodium azide and 50% glycerol pH 7.3.

Aliquoting is unnecessary for -20°C storage

For technical support and original validation data for this product please contact:

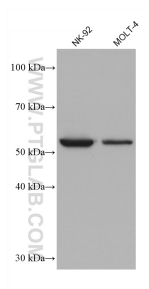
T: 4006900926

E: Proteintech-CN@ptglab.com

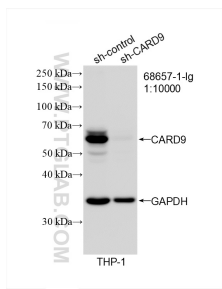
W: ptgcn.com

This product is exclusively available under Proteintech Group brand and is not available to purchase from any other manufacturer.

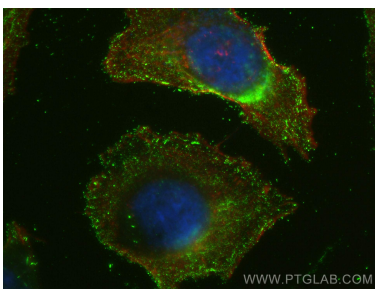
Selected Validation Data



Various lysates were subjected to SDS PAGE followed by western blot with 68657-1-Ig (CARD9 antibody) at dilution of 1:10000 incubated at room temperature for 1.5 hours.



WB result of CARD9 antibody (68657-1-Ig; 1:10000; incubated at room temperature for 1.5 hours) with sh-Control and sh-CARD9 transfected THP-1 cells.



Immunofluorescent analysis of (-20°C Ethanol) fixed HeLa cells using CARD9 antibody (68657-1-Ig, Clone: 2F3E10) at dilution of 1:400 and Multi-rAb CoraLite ® Plus 488-Goat Anti-Mouse Recombinant Secondary Antibody (H+L) (RGAM002).