

Basic Information

Catalog Number:

68652-1-PBS

Concentration:

1mg/ml

Source:

Mouse

Isotype:

IgG2a

Immunogen Catalog Number:

AG7134

GenBank Accession Number:

BC065509

GeneID (NCBI):

1292

UNIPROT ID:

P12110

Full Name:

collagen, type VI, alpha 2

Calculated MW:

109 kDa

Observed MW:

140 kDa

Purification Method:

Protein A purification

CloneNo.:

3E9C2

Applications

Tested Applications:

WB, Indirect ELISA

Species Specificity:

human

Background Information

Collagen VI, composed of three polypeptides, alpha-1(VI), alpha-2(VI), and alpha-3(VI) chains, is a beaded filament collagen found in most connective tissues. The alpha-1(VI) and alpha-2(VI) chains are 140 kDa, while the alpha-3(VI) chain is 200-300 kDa (PMID: 3792302, 3348212). COL6A2 gene encodes the alpha-2 subunit of type VI collagen. The alpha-2(VI) subunit has a calculated molecular weight of 109 kDa, and an apparent molecular weight of 140 kDa due to posttranslational modification. Mutations in COL6A2 gene are associated with Bethlem myopathy and Ullrich scleroatonic muscular dystrophy. Three transcript variants have been identified for this gene.

Storage

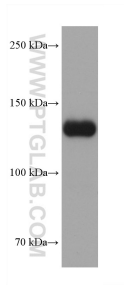
Storage:

Store at -80°C.

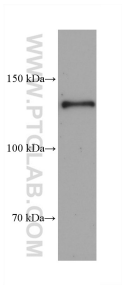
The product is shipped with ice packs. Upon receipt, store it immediately at -80°C**Storage Buffer:**

PBS only

Selected Validation Data



human placenta tissue were subjected to SDS PAGE followed by western blot with 68652-1-Ig (COL6A2 antibody) at dilution of 1:10000 incubated at room temperature for 1.5 hours. This data was developed using the same antibody clone with 68652-1-PBS in a different storage buffer formulation.



human heart tissue were subjected to SDS PAGE followed by western blot with 68652-1-Ig (COL6A2 antibody) at dilution of 1:10000 incubated at room temperature for 1.5 hours. This data was developed using the same antibody clone with 68652-1-PBS in a different storage buffer formulation.